

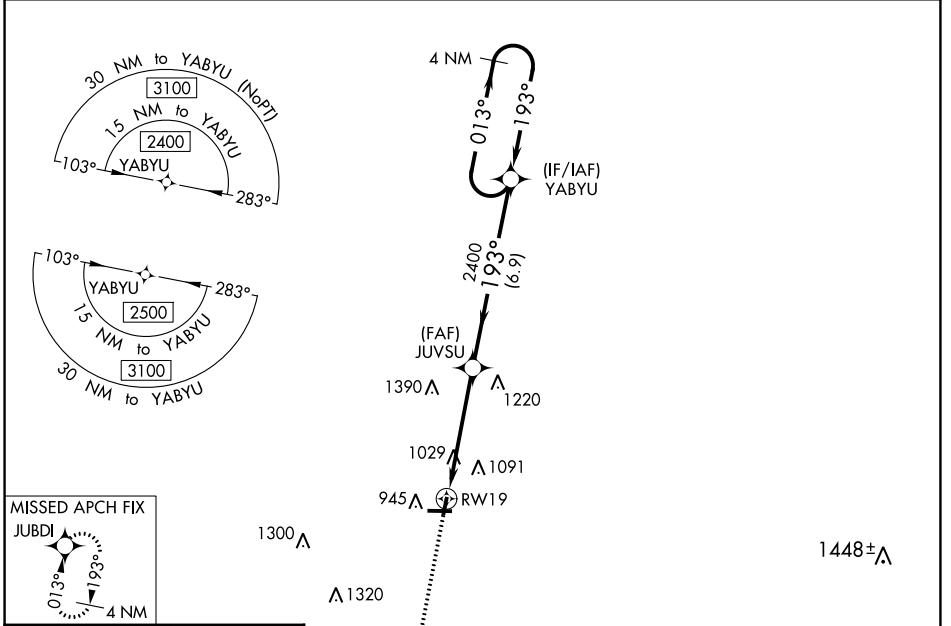
WAAS CH <b>97533</b> <b>W19A</b>	APP CRS <b>193°</b>	Rwy Idg TDZE Apt Elev	<b>3200</b> <b>857</b> <b>858</b>
--	------------------------	-----------------------------	---

# RNAV (GPS) RWY 19

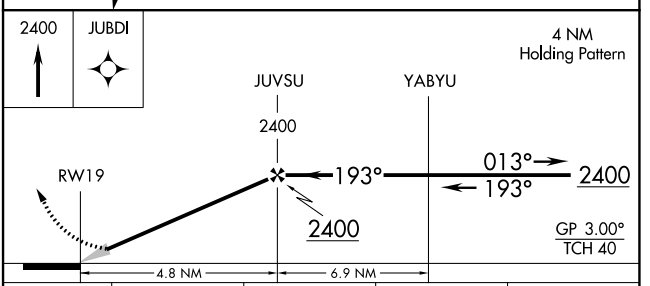
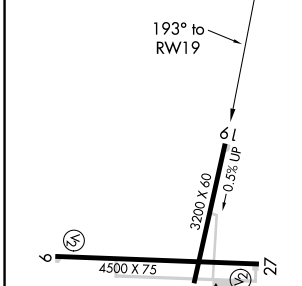
KEWANEE MUNI (EZI)

RNP APCH - GPS.	<p>Baro-VNAV NA. Use Galesburg altimeter setting. When local altimeter setting not received, use Moline altimeter setting and increase LPV DA to 1212 feet; increase LNAV/VNAV DA to 1446 feet and all visibilities <math>\frac{1}{8}</math> SM. Increase all MDAs 40 feet and LNAV visibility Cat C <math>\frac{1}{8}</math> SM, and Circling visibility Cat C <math>\frac{1}{4}</math>.</p>	MISSED APPROACH: Climb to 2400 direct JUBDI and hold.
-----------------	---	--

QUAD CITY APP CON ★ <b>133.275 257.8</b>	UNICOM <b>122.8 (CTAF) 1</b>
---	---------------------------------



ELEV <b>858</b>	TDZE <b>857</b>
-----------------	-----------------



CATEGORY	A	B	C	D
LPV DA	1182-1 325 (400-1)			NA
LNAV/VNAV DA	1416-1 $\frac{5}{8}$ 559 (600-1 $\frac{5}{8}$ )			NA
LNAV MDA	1400-1	543 (600-1)	1400-1 $\frac{5}{8}$ 543 (600-1 $\frac{5}{8}$ )	NA
<input checked="" type="checkbox"/> CIRCLING	1400-1 542 (600-1)	1520-1 662 (700-1)	1520-1 $\frac{3}{4}$ 662 (700-1 $\frac{3}{4}$ )	NA

EC-3, 28 NOV 2024 to 26 DEC 2024

EC-3, 28 NOV 2024 to 26 DEC 2024