

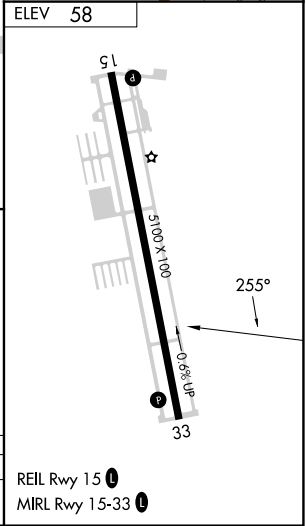
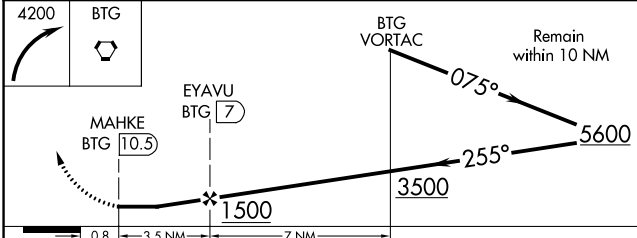
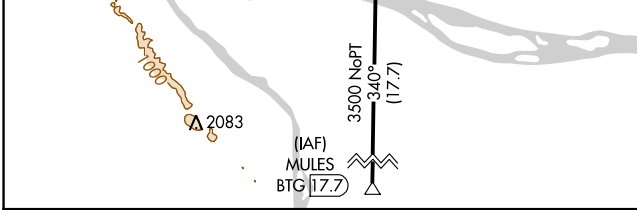
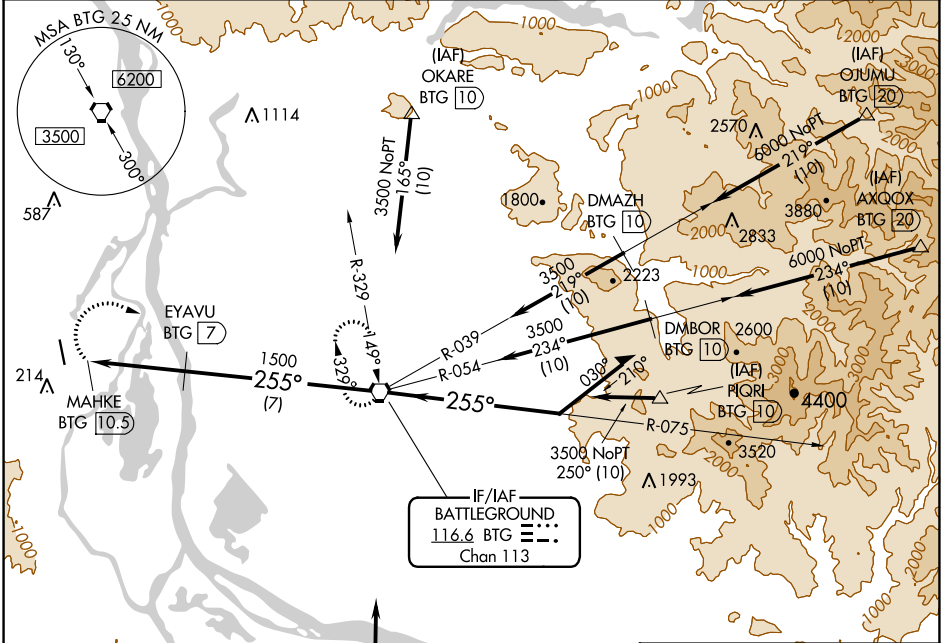
VORTAC BTG <b>116.6</b> Chan <b>113</b>	APP CRS <b>255°</b>	Rwy Idg TDZE Apt Elev <b>N/A</b> <b>N/A</b> <b>58</b>
---	------------------------	--

# VOR/DME-A SCAPOOSE (SPB)

**⚠** Circling to Rwy 15 NA at night. Circling NA west of Rwy 15-33. When local altimeter setting not received, use Portland Intl altimeter setting; increase all MDAs 40 feet. Increase Circling Cat D visibility ¼ SM.

**⚠** MISSED APPROACH: Climbing right turn to 4200 direct BTG VORTAC and hold, continue climb-in-hold to 4200.

ASOS <b>135.875</b>	PORTLAND APP CON <b>124.35 299.2</b>	CLNC DEL <b>121.65</b>	UNICOM <b>122.8</b> (CTAF) <b>📞</b>
------------------------	---	---------------------------	--



CATEGORY	A	B	C	D
CIRCLING	660-1 602 (700-1)		660-1¾ 602 (700-1¾)	860-2½ 802 (900-2½)

NW-1, 28 NOV 2024 to 26 DEC 2024

NW-1, 28 NOV 2024 to 26 DEC 2024