

RNAV (GPS) RWY 36

SHELBY COUNTY (2H \emptyset)

APP CRS	Rwy Idg	4098
002°	TDZE	619
	Apt Elev	619

RNP APCH - GPS.

⚠ Circling NA to Rws 4, 14, 22, and 32. Use Decatur altimeter setting, when not received use Mattoon/Charleston altimeter setting and increase all MDAs 20 feet, and Circling Cat C visibility ¼ SM. Rwy 36 helicopter visibility reduction below 1 SM NA. Straight-in and Circling Rwy 36 NA at night.

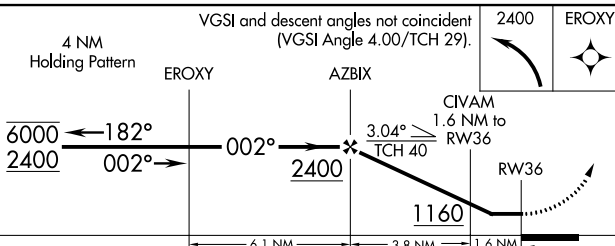
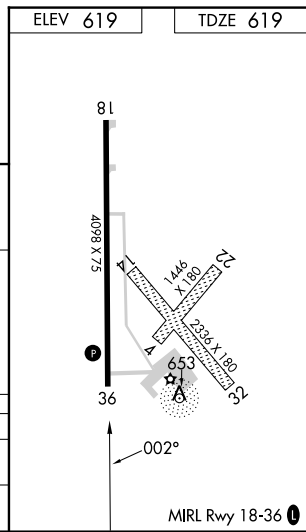
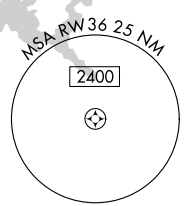
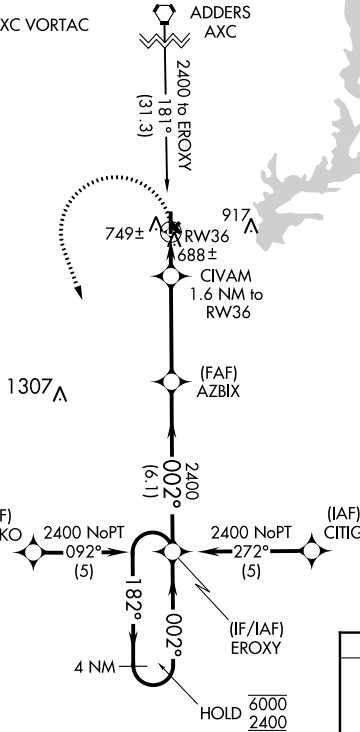
MISSED APPROACH:
Climbing left turn to 2400 direct EROXY and hold.

DEC ASOS
126.35

KANSAS CITY CENTER
124.3 269.15

UNICOM
122.8 (CTAF) \emptyset

Procedure NA for arrival on AXC VORTAC
airway radials 098 CW 217.



CATEGORY	A	B	C	D
LNVA MDA	1080-1	461 (500-1)	1080-1 $\frac{3}{8}$ 461 (500-1 $\frac{3}{8}$)	NA
C CIRCLING	1280-1	661 (700-1)	1340-2 721 (800-2)	NA

EC-3, 28 NOV 2024 to 26 DEC 2024

EC-3, 28 NOV 2024 to 26 DEC 2024