

APP CRS
347°

Rwy Idg **3084**
TDZE **574**
Apt Elev **574**

RNAV (GPS) RWY 35

RALPH M HALL/ROCKWALL MUNI (F46)

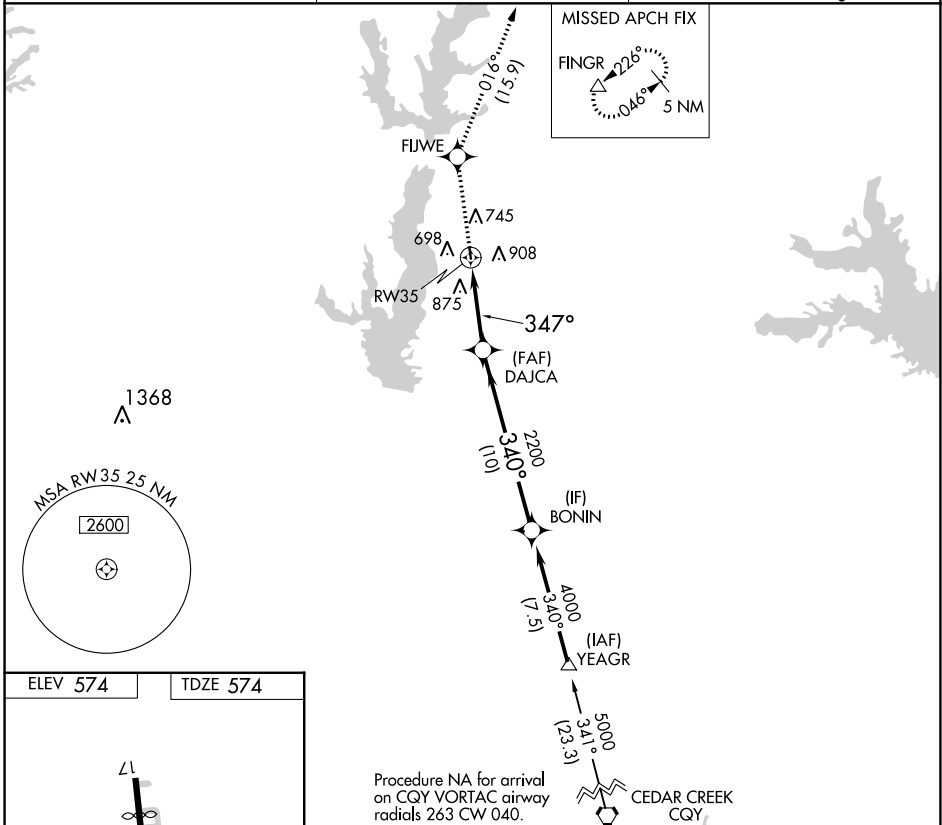
▼ DME/DME RNP-0.3 NA. When local altimeter setting not received, use Dallas Love Fld altimeter setting and increase all MDA 80 feet.
▲ Helicopter visibility reduction below 1 SM NA. Procedure NA at night.

MISSED APPROACH: Climb to 5000 direct FIJWE and on track 016° to FINGR and hold.

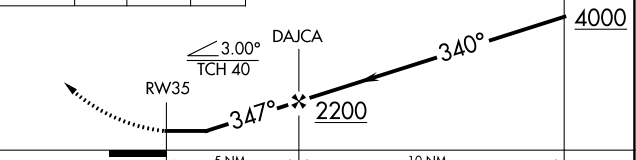
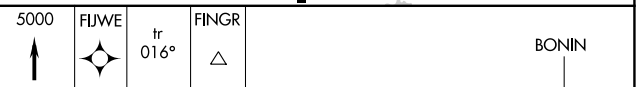
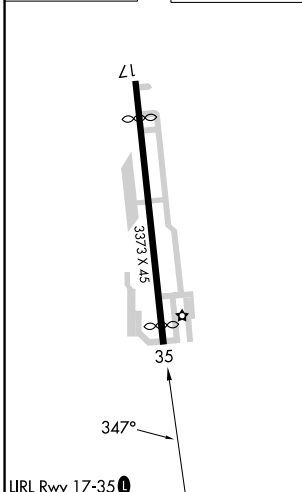
AWOS-3PT
121.25

LONE STAR APP CON
124.3 282.275

UNICOM
122.8 (CTAF) ①



ELEV 574 TDZE 574



CATEGORY	A	B	C	D
LNAV MDA	1200-1	626 (700-1)	NA	
CIRCLING	1280-1	706 (800-1)	NA	