

SWABR ONE DEPARTURE (RNAV)

LONE STAR DEP CON
124.3 282.275
CTAF
122.8

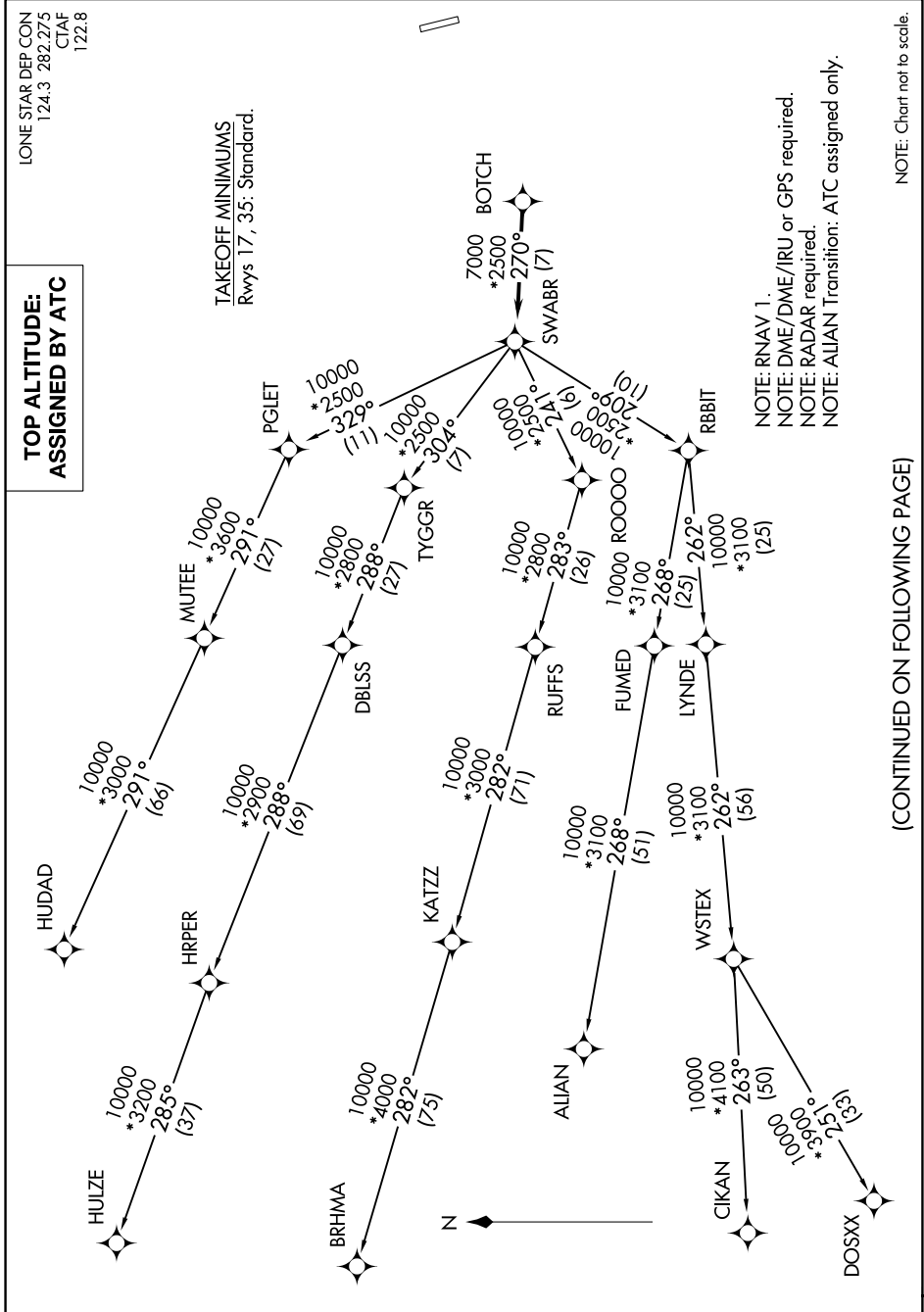
TOP ALTITUDE: ASSIGNED BY ATC

TAKEOFF MINIMUMS
Rwys 17, 35: Standard.

NOTE: RNAV 1.
NOTE: DME/DME/IRU or GFS required.
NOTE: RADAR required.
NOTE: ALIAN Transition: ATC assigned only.

NOTE: Chart not to scale.

SC-2, 28 NOV 2024 to 26 DEC 2024



(CONTINUED ON FOLLOWING PAGE)

SC-2, 28 NOV 2024 to 26 DEC 2024

SWABR ONE DEPARTURE (RNAV)