

APP CRS Rwy Idg **4700**
 TDZE **686**
 Apt Elev **694**

RNAV (GPS) RWY 13

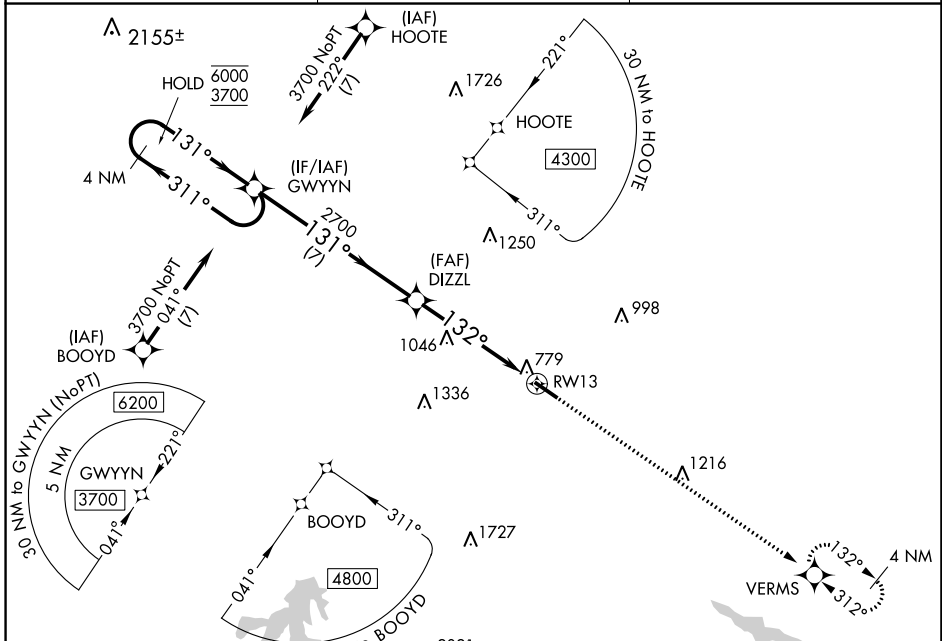
ROCKINGHAM COUNTY NC SHILOH (SIF')

RNP APCH - GPS.

- ▼ VDP NA when using GSO altimeter setting.
- ▲ Rwy 13 helicopter visibility reduction below 3/4 SM NA.

MISSED APPROACH: Climb to 3600 direct VERMS and hold.

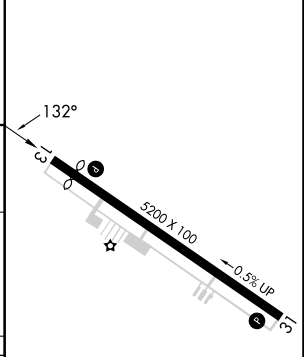
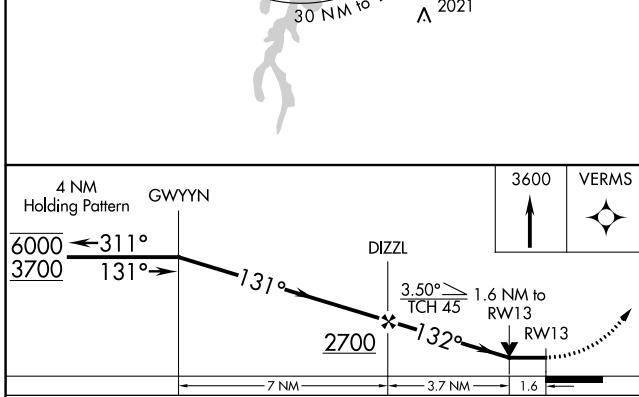
AWOS-3 119.775	GREENSBORO APP CON 124.35 269.225	UNICOM 122.8 (CTAF) ①
--------------------------	---------------------------------------------	---------------------------------



SE-2, 28 NOV 2024 to 26 DEC 2024

SE-2, 28 NOV 2024 to 26 DEC 2024

ELEV 694	TDZE 686
----------	----------



CATEGORY	A	B	C	D	
LNNAV MDA	1380-1	694 (700-1)	1380-2	694 (700-2)	
CIRCLING	1380-1	686 (700-1)	1380-2 686 (700-2)	1440-2½ 746 (800-2½)	REIL Rwy 13 and 31 ① HIRL Rwy 13-31 ①