

| | | |
|-------------|----------|-------------|
| APP CRS | Rwy Idg | 2163 |
| 174° | TDZE | 416 |
| | Apt Elev | 416 |

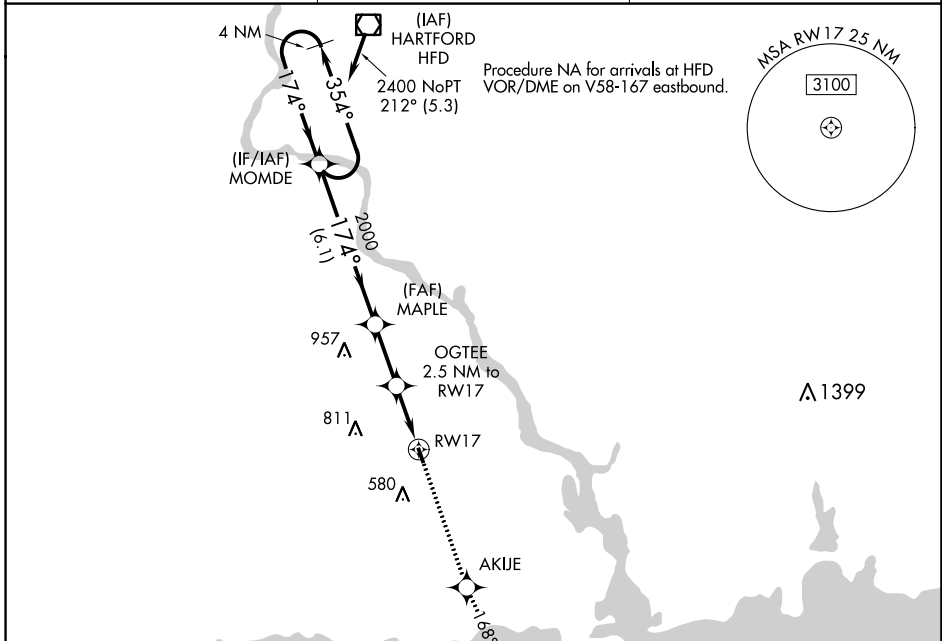
RNAV (GPS) RWY 17

CHESTER (SNC)

⚠ DME/DME RNP-0.3 NA. Procedure NA at night. Helicopter visibility reduction below 1 SM NA.
⚠ When local altimeter setting not received, use Meriden altimeter setting and increase all MDA 100 feet.

MISSED APPROACH: Climb to 2100 direct AKIJE and via track 168° to FLIBB and hold.

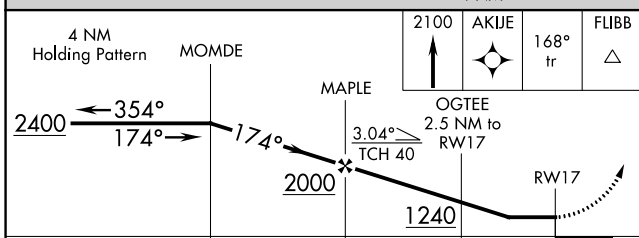
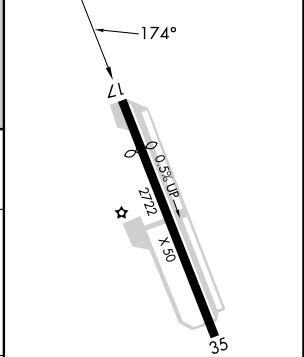
| | | |
|--------------------------|---|---------------------------------|
| AWOS-3 118.325 | NEW YORK APP CON 124.075 343.65 | UNICOM 122.725 (CTAF) |
|--------------------------|---|---------------------------------|



Procedure NA for arrivals at FLIBB on V16-374 southwest bound.

2400 to MOMDE 353° (21.2)

| | |
|----------|----------|
| ELEV 416 | TDZE 416 |
|----------|----------|



| CATEGORY | A | B | C | D |
|----------|----------------------|-----------------------|----|---|
| LNVA MDA | 960-1 | 544 (600-1) | NA | |
| CIRCLING | 960-1 544 (600-1) | 1020-1 604 (700-1) | NA | |

REIL Rwy 17 and 35
MIRL Rwy 17-35

NE-1, 28 NOV 2024 to 26 DEC 2024

NE-1, 28 NOV 2024 to 26 DEC 2024