

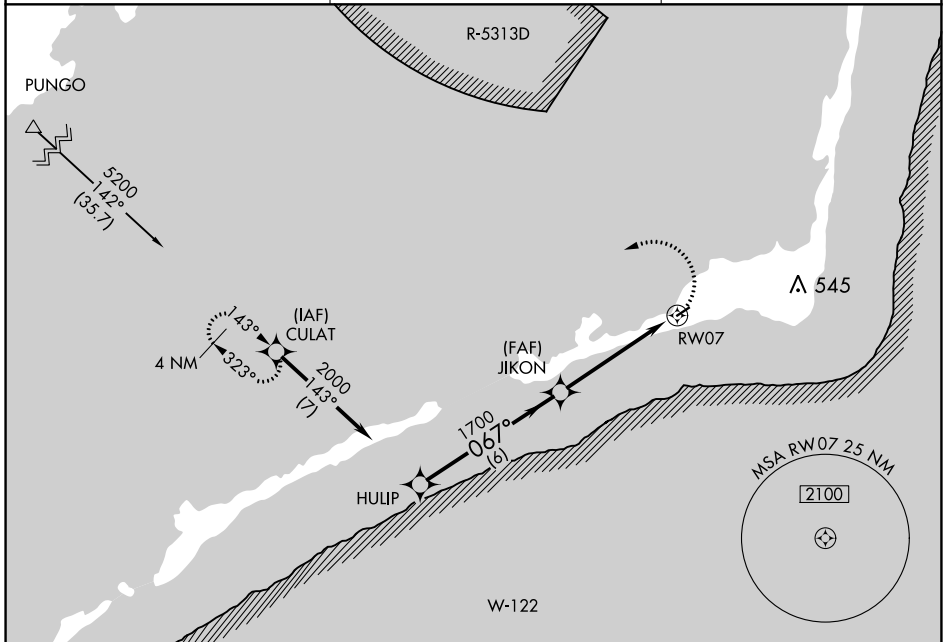
APP CRS	Rwy Idg	3002
067°	TDZE	15
	Apt Elev	17

RNAV (GPS) RWY 7

BILLY MITCHELL (HSE)

Procedure NA at night. GPS or RNP-0.3 required. DME/DME RNP-0.3 NA.	MISSED APPROACH: Climbing left turn to 6000 direct CULAT WP and hold.
---	---

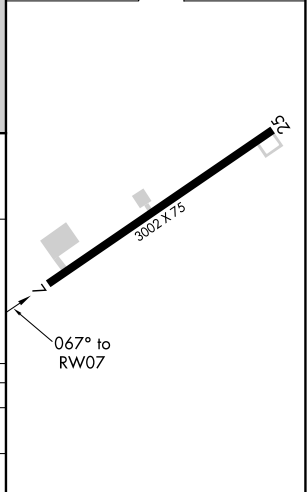
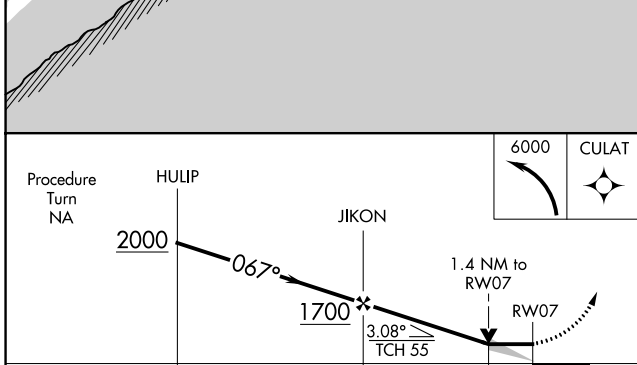
ASOS 118.375	CHERRY POINT APP CON 119.75 360.775	CTAF 122.9
------------------------	---	----------------------



SE-2, 28 NOV 2024 to 26 DEC 2024

SE-2, 28 NOV 2024 to 26 DEC 2024

ELEV 17	TDZE 15
---------	---------



CATEGORY	A	B	C	D
LNVA MDA	500-1	485 (500-1)	500-1¼ 485 (500-1¼)	NA
CIRCLING	560-1	543 (600-1)	560-1½ 543 (600-1½)	NA