

APP CRS	Rwy Idg	3194
237°	TDZE	87
	Apt Elev	87

RNAV (GPS) RWY 24

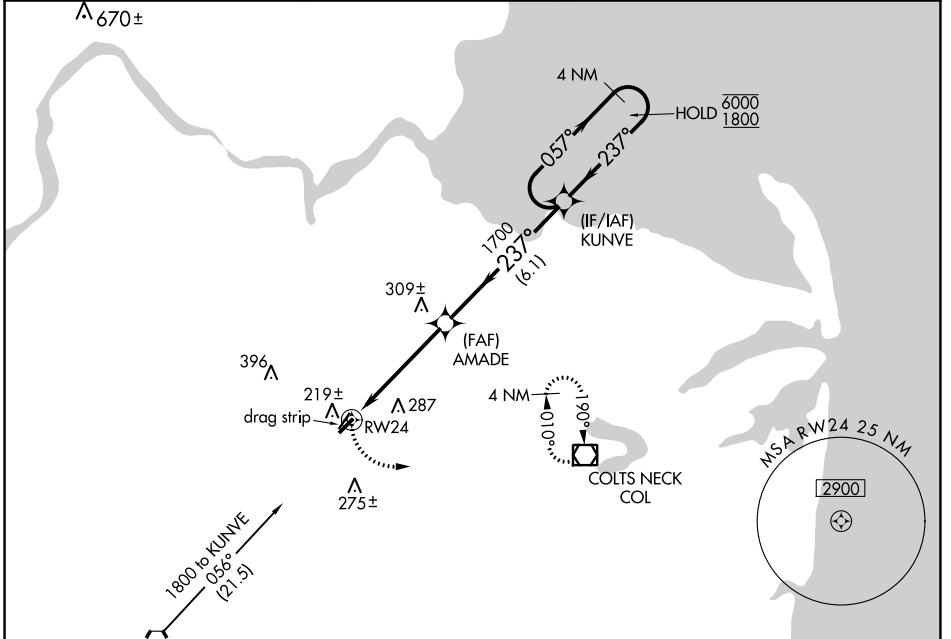
OLD BRIDGE (3N6)

RNP APCH - GPS.

NA Procedure NA at night. Rwy 24 helicopter visibility reduction below 1 SM NA. Use Belmar/Farmingdale altimeter setting; when not received, use Wrightstown altimeter setting and increase all MDA 20 feet.

MISSED APPROACH: Climbing left turn to 2000 direct COL VOR/DME and hold.

BLM AWOS-3PT 121.625	MC GUIRE APP CON 126.475 363.8	GCO 121.725	UNICOM 123.075 (CTAF)
--------------------------------	--	-----------------------	---------------------------------



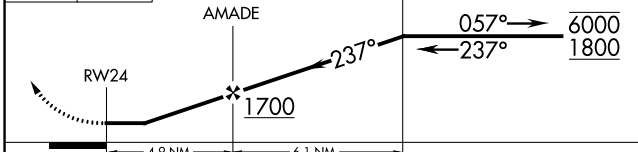
NE-2, 28 NOV 2024 to 26 DEC 2024

NE-2, 28 NOV 2024 to 26 DEC 2024

ELEV 87	TDZE 87
---------	---------

2000 COL Visual Segment - Obstacles.

4 NM Holding Pattern



CATEGORY	A	B	C	D
LNAV MDA	620-1	533 (600-1)	NA	
CIRCLING	620-1 533 (600-1)	640-1 553 (600-1)	NA	

