

SW-1, 28 NOV 2024 to 26 DEC 2024

DEPARTURE ROUTE DESCRIPTION

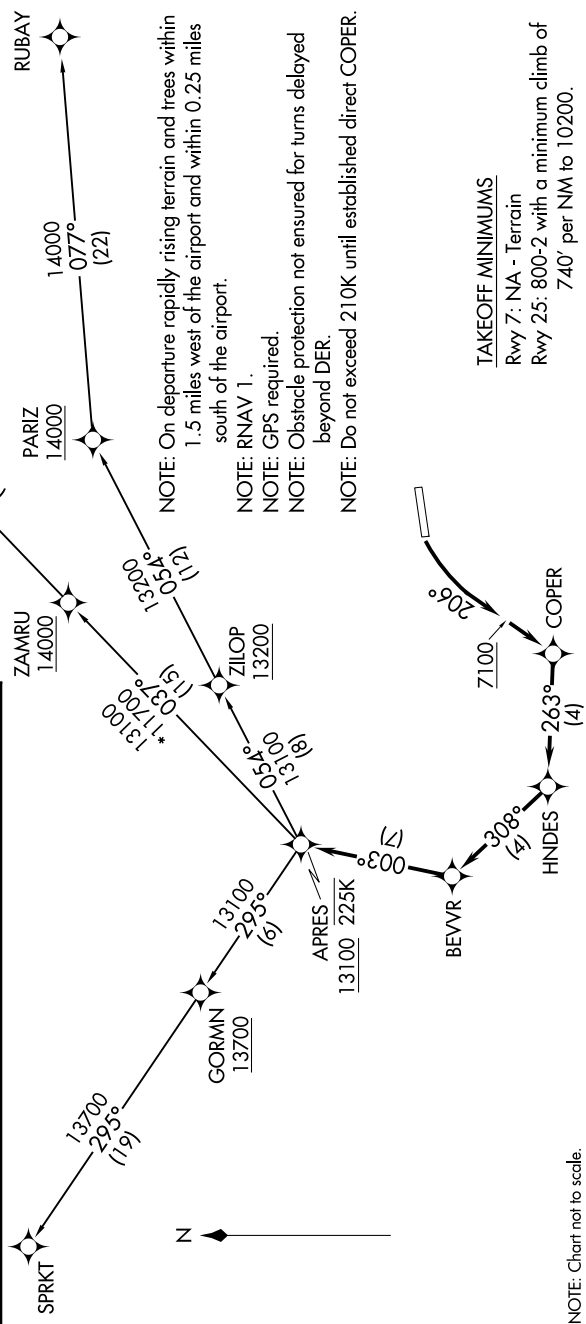
TAKEOFF RUNWAY 25: Begin a climbing left turn as soon as practicable but no later than DER heading 206° to 7100, then direct COPER, then on depicted route to cross APRES at or above 13100, thence. . . .

. . . on (assigned) transition, maintain 15000. Expect filed altitude 10 minutes after departure.

- BELGN TRANSITION (BEVVR1.BELGN)
- RUBAY TRANSITION (BEVVR1.RUBAY)
- SPRKT TRANSITION (BEVVR1.SPRKT)

**TOP ALTITUDE:
15000**

- ATIS 135.575
- CLINC DEL 124.75
- DENVER CLNC DEL 124.75
- GND.CON (When tower closed)
- EAGLE TOWER * 121.8
- DENVER CENTER 119.8
- 128.65 282.2



SW-1, 28 NOV 2024 to 26 DEC 2024