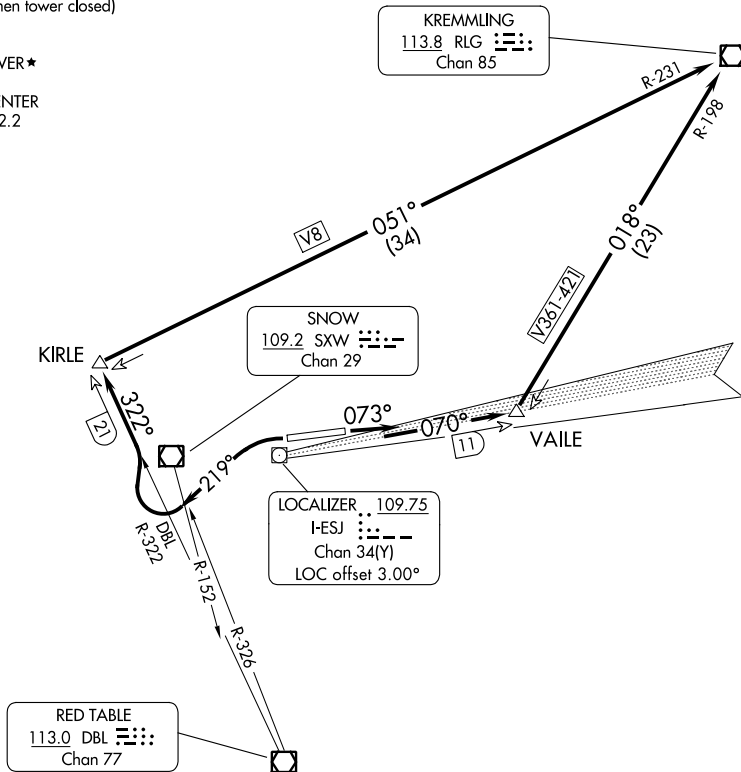


ATIS  
135.575  
CLNC DEL  
124.75  
DENVER CLNC DEL  
124.75 (When tower closed)  
GND CON  
121.8  
EAGLE TOWER ★  
119.8  
DENVER CENTER  
128.65 282.2



SW-1, 28 NOV 2024 to 26 DEC 2024

SW-1, 28 NOV 2024 to 26 DEC 2024

### TAKEOFF MINIMUMS

Rwy 7: Standard with minimum climb of 580' per NM to 12000.  
Rwy 25: Standard with minimum climb of 815' per NM to 9200.

NOTE: Chart not to scale.



### DEPARTURE ROUTE DESCRIPTION

**TAKEOFF RUNWAY 7:** Climb heading 073° and I-ESJ east course to VAILE INT/I-ESJ 11 DME then left turn on RLG R-198 to RLG VOR/DME.

**TAKEOFF RUNWAY 25:** Climbing left turn heading 219°, until crossing SXW R-152 or DBL R-326, then turn right on DBL R-322 to KIRLE INT/DBL 21 DME then turn right on RLG R-231 to RLG VOR/DME.