

# RNAV (RNP) Z RWY 25

EAGLE COUNTY RGNL (EGE)

APP CRS	Rwy Idg	<b>8000</b>
<b>253°</b>	TDZE	<b>6540</b>
	Apt Elev	<b>6547</b>

RNP AR APCH-GPS, RF, MIN RNP 0.11. Authorization required. Missed approach requires RNP <1.00.

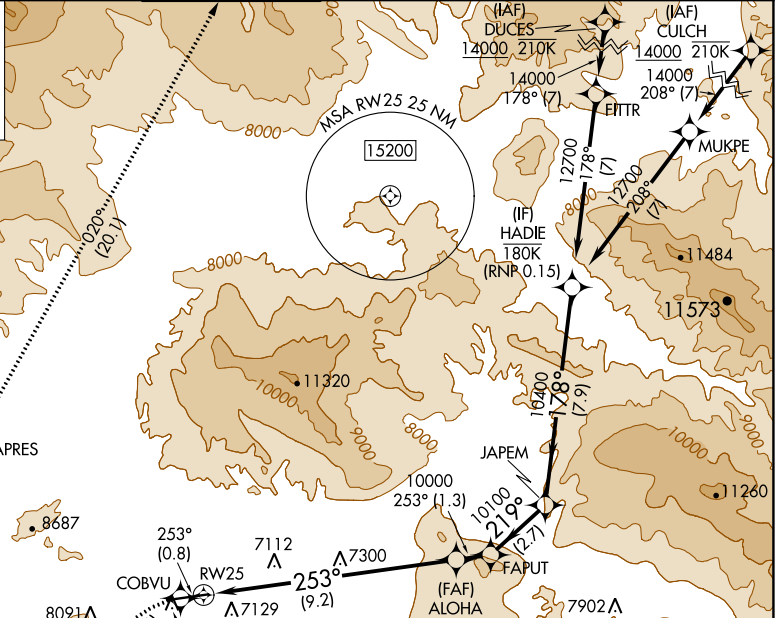
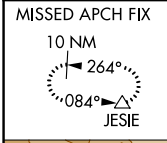
**⚠** When local climeter setting not received, procedure NA. For uncompensated Baro-VNAV systems, procedure NA below -27°C or above 33°C. For inop ALS increase RNP 0.11\* all visibilities to ½ SM.

**MALSR**

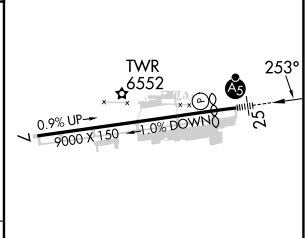
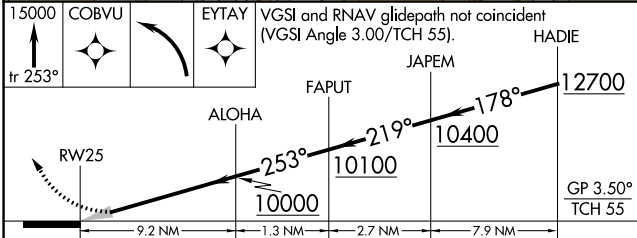
**MISSED APPROACH:** (Do not exceed 185K until HARNA) Climb to 15000 on the RNAV missed approach route to JESIE and hold.

\*Missed approach requires minimum climb of 281 feet per NM to 9000.

ATIS	DENVER CENTER	EAGLE TOWER *	GND CON	CLNC DEL	DENVER CLNC DEL
<b>135.575</b>	<b>128.65 282.2</b>	<b>119.8 (CTAF) Ⓛ</b>	<b>121.8</b>	<b>124.75</b>	<b>124.75</b> (When tower closed)



ELEV 6547	<b>D</b>	TDZE 6540
-----------	----------	-----------



CATEGORY	A	B	C	D
RNP 0.11 DA*	NA		6814-½	274 (300-½)
RNP 0.11 DA	NA		7181-1⅓	641 (700-1⅓)

## AUTHORIZATION REQUIRED

HIRL Rwy 7-25 Ⓛ

REIL Rwy 7 Ⓛ

SW-1, 28 NOV 2024 to 26 DEC 2024

SW-1, 28 NOV 2024 to 26 DEC 2024