

APP CRS 255°	Rwy Idg 3111
	TDZE 1771
	Apt Elev 1783

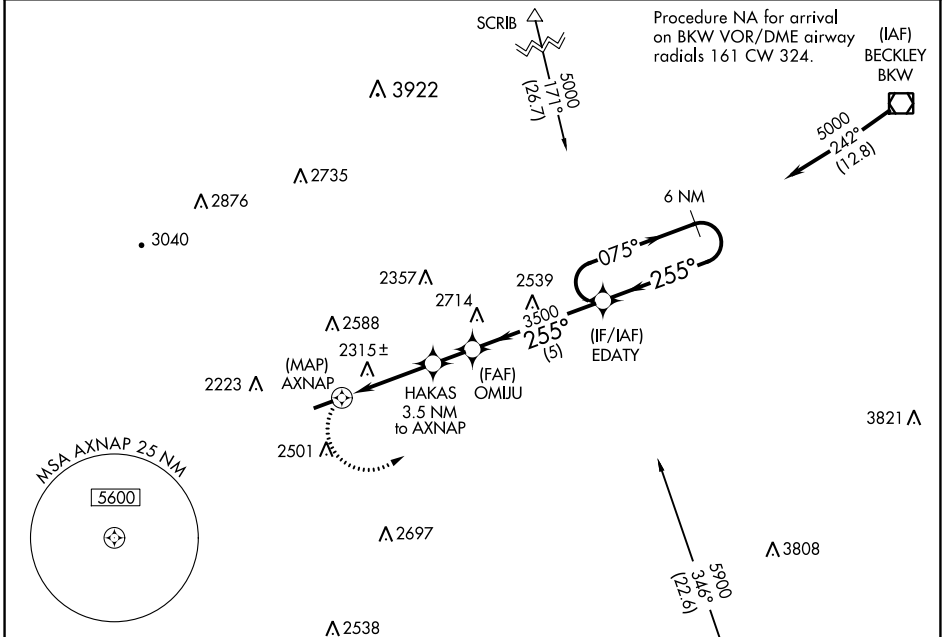
RNAV (GPS) RWY 26

KEE FLD (I16)

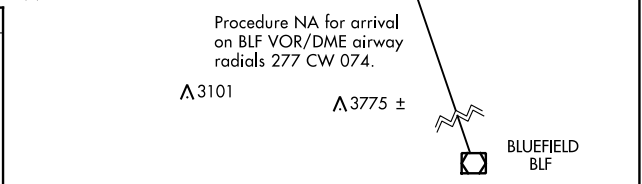
RNP APCH - GPS.	
▼	Rwy 26 helicopter visibility reduction below 1 SM NA.
▲ NA	Procedure NA at night.

MISSED APPROACH: Climbing left turn to 4400 direct EDATY and hold.

AWOS-3 120.625	CHARLESTON APP CON 125.4 269.125	UNICOM 122.8 (CTAF) 📻
--------------------------	--	--



ELEV 1783	TDZE 1771
-----------	-----------



4400 EDATY	Visual Segment - Obstacles.			6 NM Holding Pattern
AXNAP	HAKAS 3.5 NM to AXNAP	OMIJU	3500	4400
0.5	3.5 NM	1.5 NM	5 NM	

CATEGORY	A	B	C	D
RNAV MDA	2580-1 809 (800-1)	2580-1¼ 809 (800-1¼)	2580-2½ 809 (800-2½)	NA

NE-4, 28 NOV 2024 to 26 DEC 2024

NE-4, 28 NOV 2024 to 26 DEC 2024