

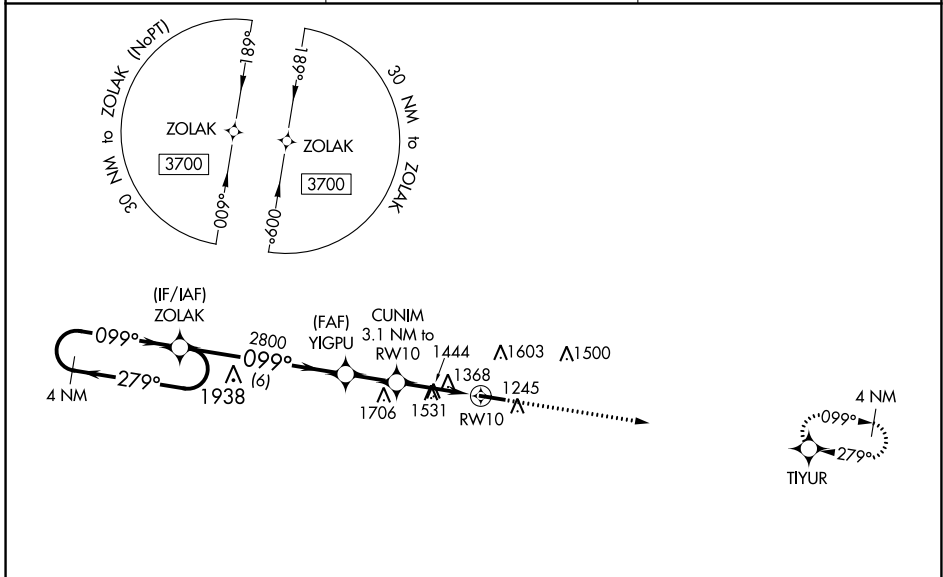
WAAS CH 73032 W10A	APP CRS 099°	Rwy Idg TDZE 1179 Apt Elev 1182
--	------------------------	---

RNAV (GPS) RWY 10

MOUNTAIN VIEW (MNF)

RNP APCH - GPS.	MISSED APPROACH: Climb to 3700 direct TIYUR and hold.
Procedure NA at night. Rwy 10 helicopter visibility reduction below 1 SM NA. Use West Plains altimeter setting, when not received, use Fort Leonard Wood altimeter setting and increase all MDA 80 feet; increase LP Cats C and D visibility ¼ mile, increase LNAV Cat B visibility ¼ mile, LNAV Cats C and D visibility ⅓ mile, and increase Circling Cats B and C visibility ¼ mile.	

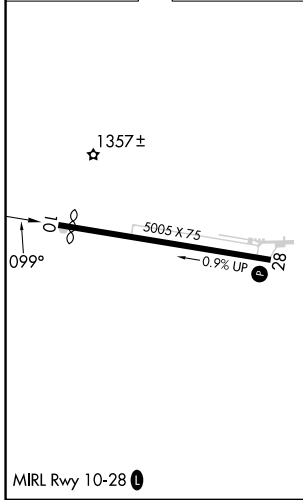
UNO ASOS 123.825	KANSAS CITY CENTER 128.35 284.675	UNICOM 122.8 (CTAF) 0
----------------------------	---	---------------------------------



NC-3, 28 NOV 2024 to 26 DEC 2024

NC-3, 28 NOV 2024 to 26 DEC 2024

ELEV 1182	TDZE 1179
-----------	-----------



Visual Segment - Obstacles.				3700	TIYUR
4 NM Holding Pattern ZOLAK 4 NM				3700	TIYUR
279° ← 099° → 099° → 2800 2800 2200 RW10				3700	TIYUR
6 NM 1.9 NM 3.1 NM				3700	TIYUR
CATEGORY	A	B	C	D	
LP MDA	1780-1	601 (600-1)	1780-1¾	601 (600-1¾)	
LNAV MDA	1820-1	641 (700-1)	1820-1⅞	641 (700-1⅞)	
CIRCLING	1880-1 698 (700-1)	2080-1¼ 898 (900-1¼)	2080-2¾ 898 (900-2¾)	2180-3 998 (1000-3)	