

WAAS CH 86233 W26A	APP CRS 264°	Rwy Idg TDZE 176 Apt Elev 176	5004
--	------------------------	---	-------------

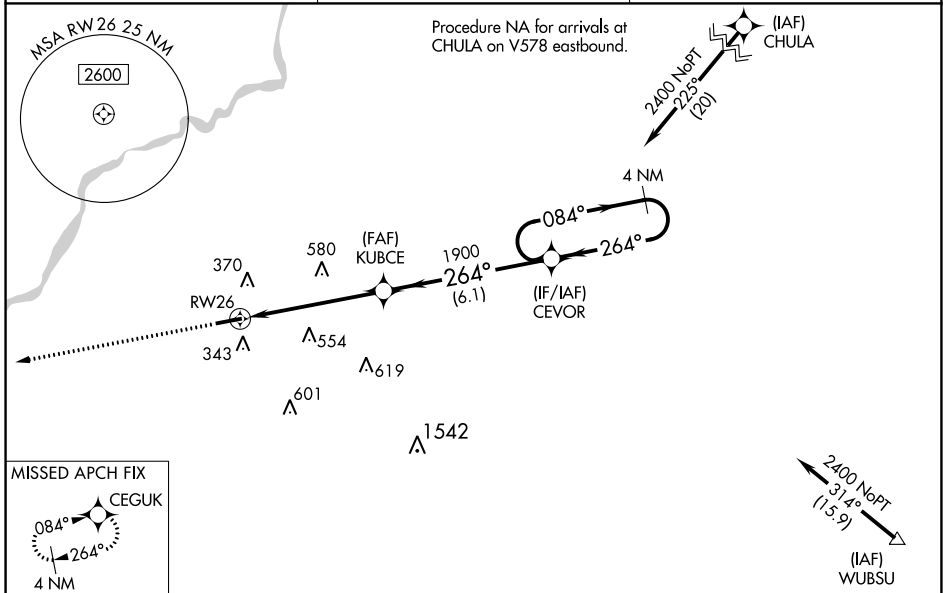
RNAV (GPS) RWY 26

CAMILLA-MITCHELL COUNTY (CXU)

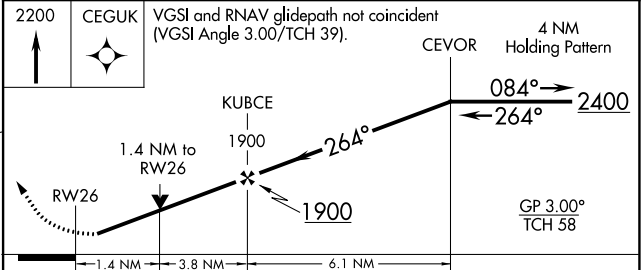
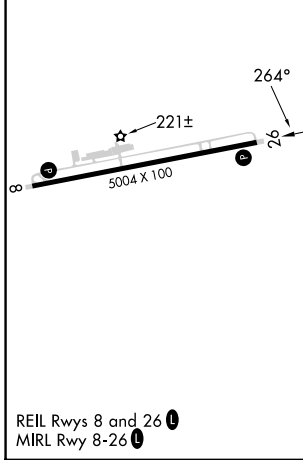
NA Baro-VNAV NA when using Albany altimeter setting. For uncompensated Baro-VNAV systems, LNAV/VNAV NA below -15°C (5°F) or above 54°C (130°F). DME/DME RNP-0.3 NA. When local altimeter setting not received, use Albany altimeter setting and increase LPV DA to 553 feet; increase LNAV/VNAV DA to 601 feet; increase all MDAs 60 feet and LNAV Cats C/D and Circling Cat D visibility ¼ SM. Rwy 26 helicopter visibility reduction below ¾ SM NA.

MISSED APPROACH:
Climb to 2200 direct CEGUK and hold.

AWOS-3T 118.675	JACKSONVILLE CENTER 125.75 363.075	UNICOM 122.8 (CTAF) 📻
---------------------------	--	--



ELEV 176	TDZE 176
----------	----------



CATEGORY	A	B	C	D
LPV DA	505-1 329 (400-1)			
LNAV/VNAV DA	553-1¼ 377 (400-1¼)			
LNAV MDA	660-1	484 (500-1)	660-1⅜ 484 (500-1⅜)	
CIRCLING	720-1 544 (600-1)	760-1 584 (600-1)	920-2¼ 744 (800-2¼)	940-2½ 764 (800-2½)

CAMILLA, GEORGIA
Amdt 1D 21APR22

31°13'N-84°14'W

RNAV (GPS) RWY 26

SE-4, 28 NOV 2024 to 26 DEC 2024

SE-4, 28 NOV 2024 to 26 DEC 2024