

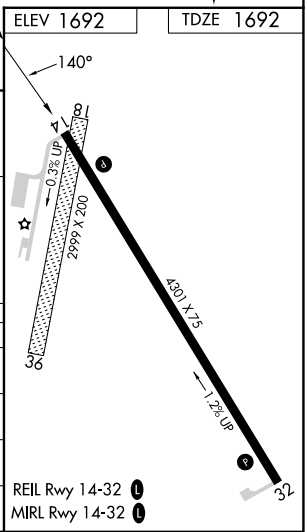
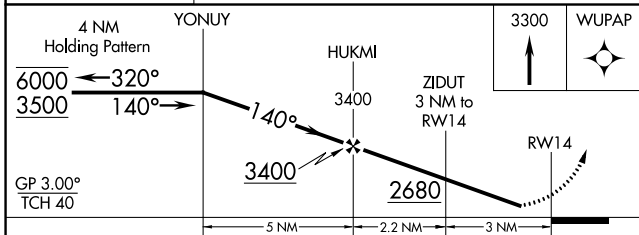
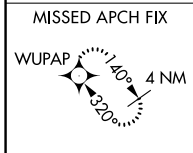
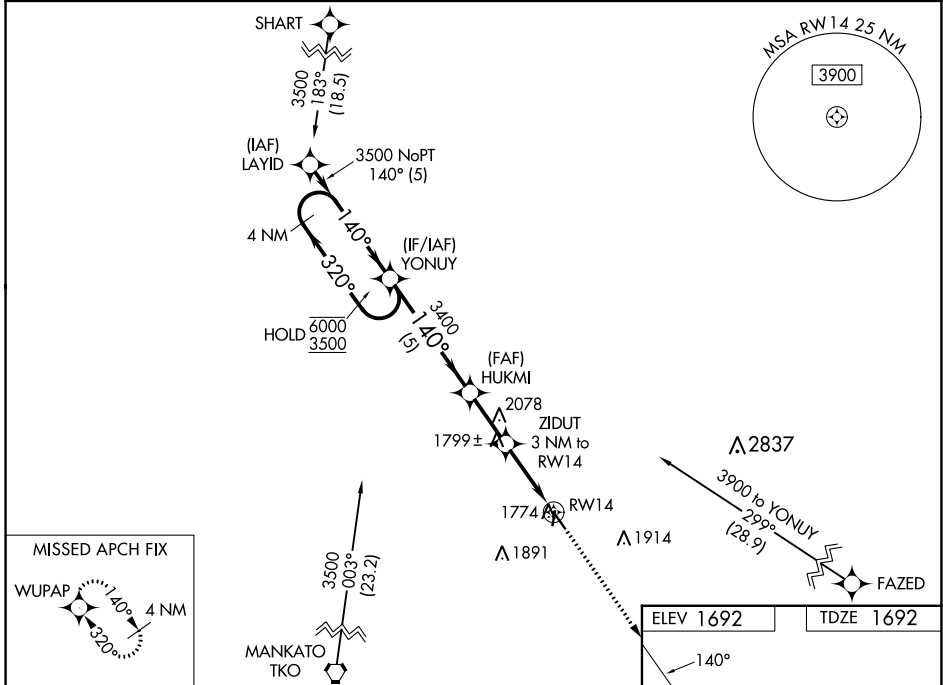
WAAS CH 53428 W14A	APP CRS 140°	Rwy Idg 4301 TDZE 1692 Apt Elev 1692
--	------------------------	---

RNAV (GPS) RWY 14

SUPERIOR MUNI (12K)

RNP APCH - GPS.		MISSED APPROACH: Climb to 3300 direct WUPAP and hold.
<p>▼ Rwy 14 helicopter visibility reduction below 3/4 SM NA. Circling Rwy 18, 36 NA at night. Baro-VNAV NA. Use Hebron altimeter setting, when not received, use Hastings altimeter setting: increase LPV and LNAV/VNAV DA to 2072 feet; increase all MDAs 60 feet and Circling visibility Cat C 1/4 SM.</p> <p>▲ NA</p>		

HJH AWOS-3 118.525	MINNEAPOLIS CENTER 119.4 278.8	UNICOM 123.0 (CTAF) 0
------------------------------	--	---------------------------------



CATEGORY	A	B	C	D
LPV DA	2026-1	334 (400-1)		NA
LNAV/VNAV DA	2026-1	334 (400-1)		NA
LNAV MDA	2140-1	448 (500-1)	2140-1 3/8 448 (500-1 3/8)	NA
CIRCLING	2360-1	668 (700-1)	2360-1 3/4 668 (700-1 3/4)	NA

NC-2, 28 NOV 2024 to 26 DEC 2024

NC-2, 28 NOV 2024 to 26 DEC 2024