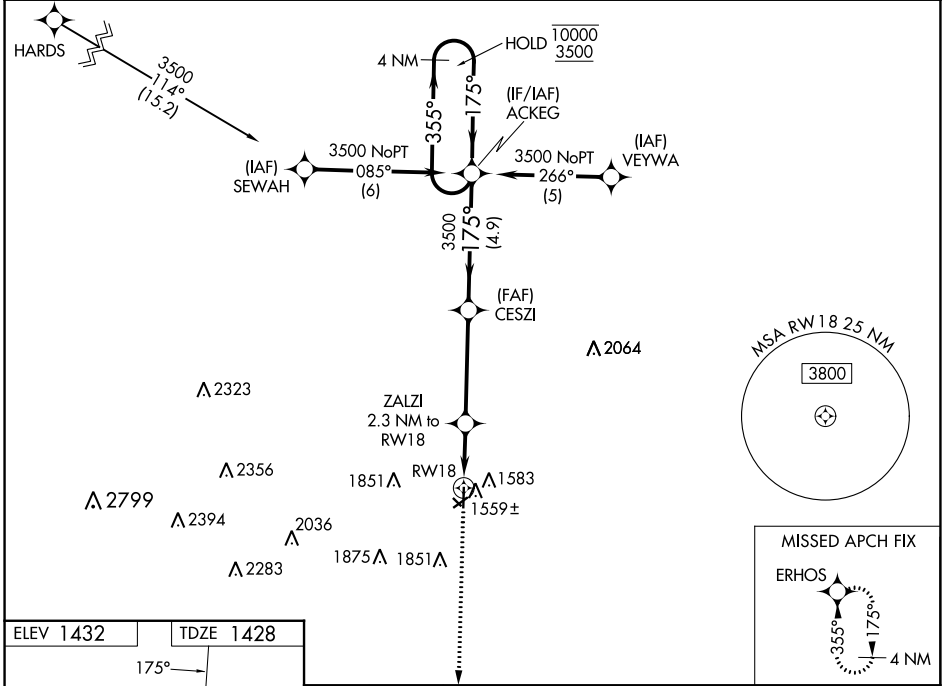


WAAS CH 77513 W18A	APP CRS 175°	Rwy Idg TDZE Apt Elev	4201 1428 1432
--	------------------------	-----------------------------	---

RNAV (GPS) RWY 18

WAYNE MUNI/STAN MORRIS FLD (L,C,G)

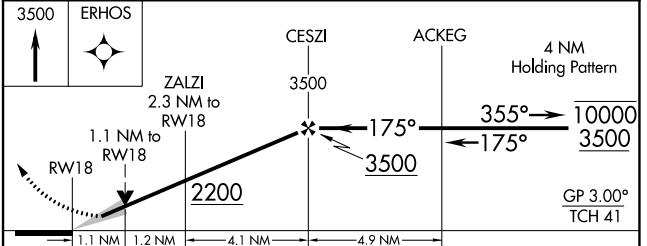
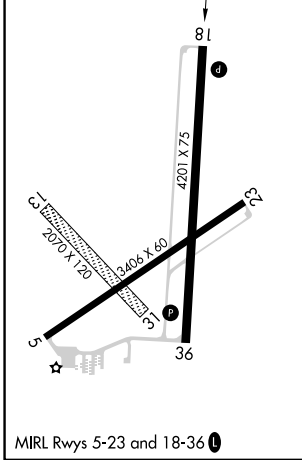
RNP APCH - GPS.		MISSED APPROACH: Climb to 3500 direct ERHOS and hold.
<p>▼ Circling NA to Rwy's 13 and 31. For uncompensated Baro-VNAV systems, LNAV/VNAV NA below -17°C or above 54°C.</p> <p>▲</p>		
AWOS-3 120.125	SIOUX CITY APP CON ★ 124.6 307.0	UNICOM 122.8 (CTAF) 0



NC-2, 28 NOV 2024 to 26 DEC 2024

NC-2, 28 NOV 2024 to 26 DEC 2024

ELEV 1432	TDZE 1428
-----------	-----------



CATEGORY	A	B	C	D
LPV DA	1678-1	250 (300-1)		NA
LNAV/VNAV DA	1678-1	250 (300-1)		NA
LNAV MDA	1820-1	392 (400-1)		NA
CIRCLING	2000-1	568 (600-1)		NA