

APP CRS	Rwy Idg	7200
270°	TDZE	176
	Apt Elev	177

RNAV (GPS) RWY 27

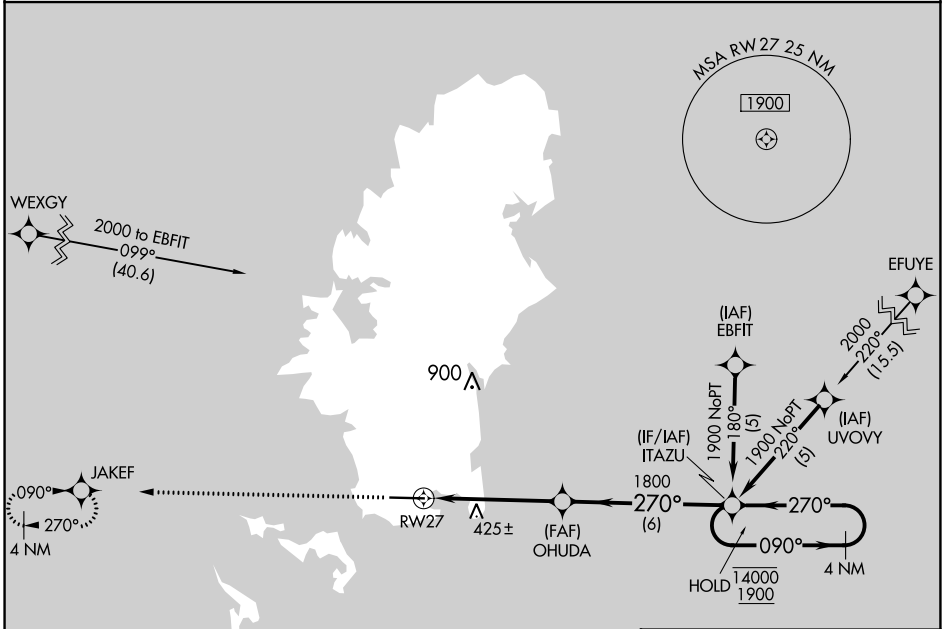
PALAU INTL (ROR)(PTRO)

RNP APCH-GPS.

⚠ Circling NA north of Rwy 9-27.
⚠ Rwy 27 helicopter visibility reduction below $\frac{3}{4}$ SM NA.
 Obtain local altimeter setting on CTAF; when not received, procedure NA. No controlled airspace below 5500.

MISSED APPROACH: Climb to 1900 direct JAKEF and hold.

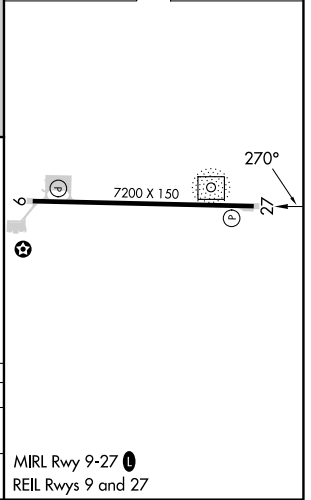
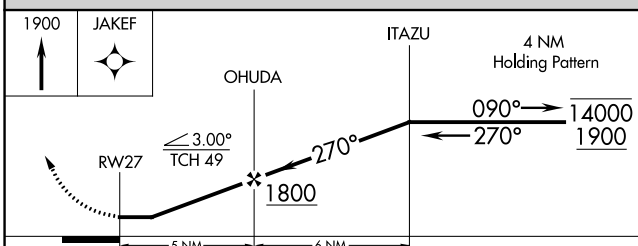
KOROR RADIO
123.6 (CTAF) **📻**



PAC, 31 OCT 2024 to 26 DEC 2024

PAC, 31 OCT 2024 to 26 DEC 2024

ELEV 177	TDZE 176
----------	----------



CATEGORY	A	B	C	D
LNAV MDA	680-1	504 (600-1)	680-1 $\frac{3}{8}$	504 (600-1 $\frac{3}{8}$)
C CIRCLING	700-1 523 (600-1)	760-1 583 (600-1)	780-1 $\frac{3}{4}$ 603 (700-1 $\frac{3}{4}$)	780-2 603 (700-2)

MIRL Rwy 9-27 **📻**
 REIL Rws 9 and 27