

WAAS CH <b>99536</b> <b>W15A</b>	APP CRS <b>151°</b>	Rwy Idg TDZE <b>198</b> Apt Elev <b>198</b>	<b>4000</b>
--	------------------------	---	-------------

# RNAV (GPS) RWY 15

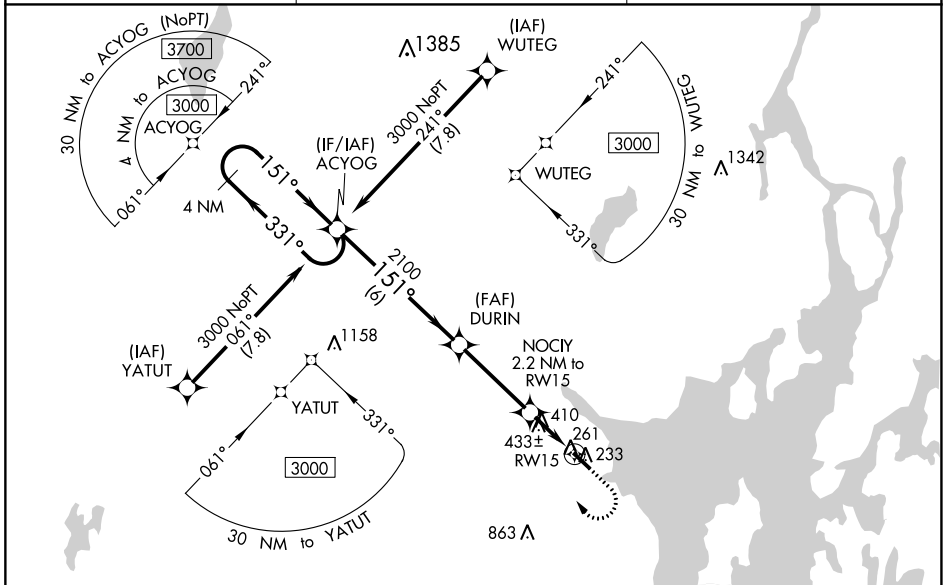
BELFAST MUNI (BST)

**⚠** For uncompensated Baro-VNAV systems, LNAV/VNAV NA below -23°C (-9°F) or above 54°C (130°F). DME/DME RNP -0.3 NA. When local altimeter not received, use Bangor Intl altimeter setting and increase all DA/MDA 60 feet. Increase LPV all Cats visibility 1/8 mile; increase LNAV/VNAV all Cats visibility 1/8 mile; increase LNAV and Circling Cat C visibility 1/4 mile. Baro-VNAV NA when using Bangor Intl altimeter. Helicopter visibility reduction below 3/4 SM NA.

**⚠ NA**

MISSED APPROACH: Climb to 900 then climbing right turn to 3000 direct ACYOG and hold.

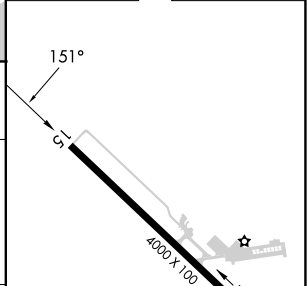
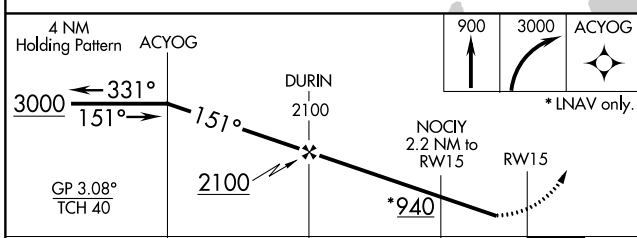
AWOS-AV <b>122.975</b>	BANGOR APP CON <b>118.925 239.3</b>	UNICOM <b>122.975 (CTAF) 0</b>
---------------------------	--	-----------------------------------



NE-1, 28 NOV 2024 to 26 DEC 2024

NE-1, 28 NOV 2024 to 26 DEC 2024

ELEV 198	TDZE 198
----------	----------



CATEGORY	4 NM Holding Pattern ACYOG			
	A	B	C	D
LPV DA	487-1 289 (300-1)			
LNAV/VNAV DA	748-1 7/8 550 (600-1 7/8)			
LNAV MDA	720-1 522 (600-1)		720-1 1/2 522 (600-1 1/2)	
<b>C</b> CIRCLING	720-1 522 (600-1)	800-1 602 (700-1)	1040-2 1/2 842 (900-2 1/2)	NA

