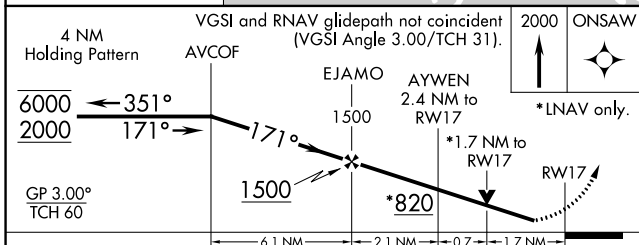
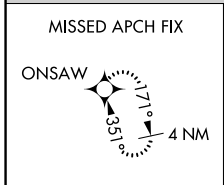
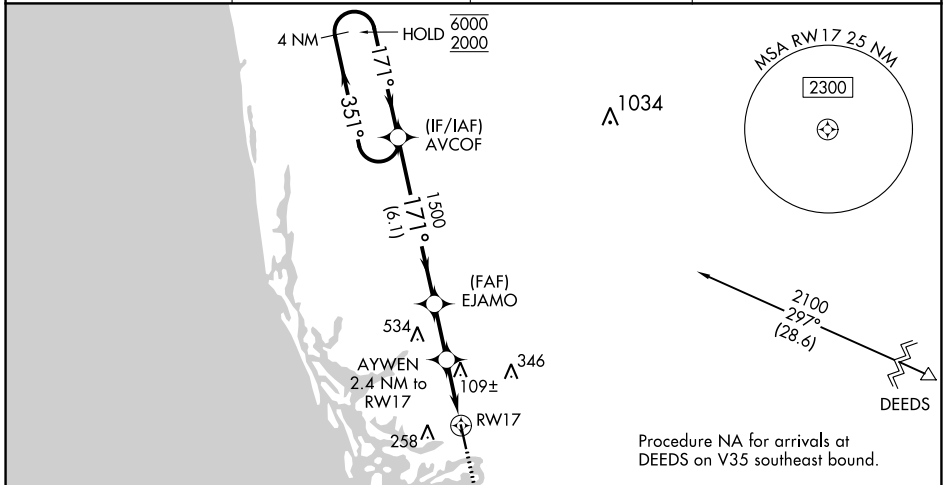


WAAS CH 93516 W17A	APP CRS 171°	Rwy Idg 5000 TDZE 5 Apt Elev 5
--	------------------------	---

RNAV (GPS) RWY 17

MARCO ISLAND EXEC (MKY)

PBN APCH.		<p>⚠ Baro-VNAV and VDP NA when using Naples altimeter setting. Rwy 17 helicopter visibility reduction below 3/4 SM NA. For uncompensated Baro-VNAV systems, LNAV/VNAV NA below 2°C or above 54°C. When local altimeter setting not received, use Naples altimeter setting and increase LPV DA to 326 feet; increase LNAV/VNAV DA to 484 feet, increase all MDAs 40 feet and LNAV visibility Cat C to 1 1/4 SM and Circling visibility Cat C to 2 SM.</p>		<p>MISSED APPROACH: Climb to 2000 direct ONSAW and hold.</p>	
AWOS-3PT 120.075	FORT MYERS APP CON * 124.125 371.85	CLNC DEL 120.8	UNICOM 122.7 (CTAF) 0		



ELEV 5	TDZE 5
171° to RW17	
REIL Rwy 17 and 35 0	
MIRL Rwy 17-35 0	

CATEGORY	A	B	C	D
LPV DA	300-1 295 (300-1)			
LNAV/VNAV DA	458-1 1/2 453 (500-1 1/2)			
LNAV MDA	560-1	555 (600-1)	560-1 1/2 555 (600-1 1/2)	560-1 3/4 555 (600-1 3/4)
CIRCLING	620-1	615 (700-1)	660-1 3/4 655 (700-1 3/4)	840-2 3/4 835 (900-2 3/4)

SE-3, 28 NOV 2024 to 26 DEC 2024

SE-3, 28 NOV 2024 to 26 DEC 2024