


WAAS CH <b>70316</b> <b>W17A</b>	APP CRS <b>175°</b>	Rwy Idg TDZE <b>25</b> Apt Elev <b>25</b>	<b>7000</b>
--	------------------------	---	-------------

# RNAV (GPS) RWY 17


TEXAS GULF COAST RGNL (L.B.X)

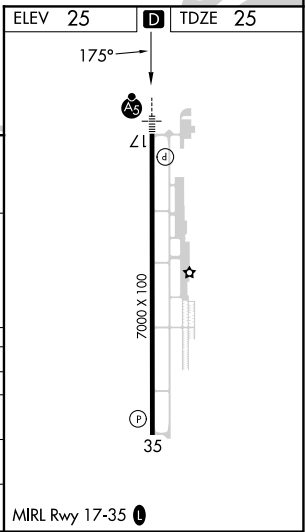
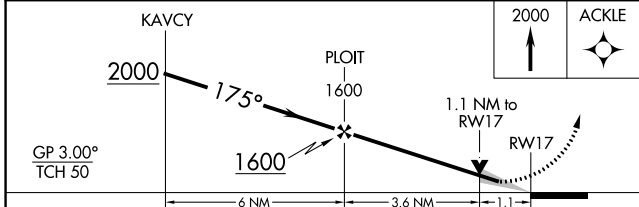
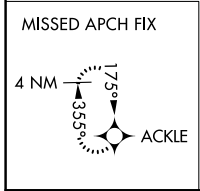
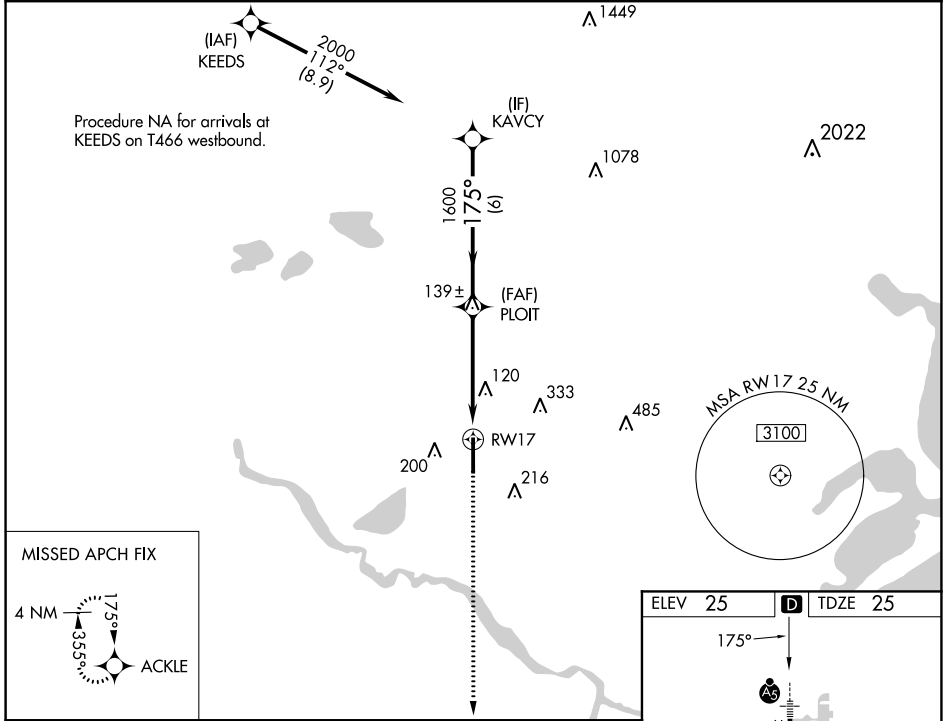
RNP APCH - GPS.

**⚠** Circling NA east of Rwy 17-35. Baro-VNAV and VDP NA when using William P. Hobby altimeter setting. For uncompensated Baro-VNAV systems, LNAV/VNAV NA below -16°C or above 54°C. When local altimeter setting not received, use William P. Hobby altimeter setting and increase LPV DA to 363 feet; increase LNAV/VNAV DA to 441 feet and all visibilities ¼ SM; increase all MDAs 100 feet and LNAV visibility Cat C/D ⅓ SM, and Circling visibility Cat D ½ SM.


MALSRL 

**MISSED APPROACH:** Climb to 2000 direct ACKLE and hold.

ASOS <b>119,925</b>	HOUSTON APP CON <b>134.45 284.0</b>	CINC DEL <b>125.2</b>	UNICOM <b>123.0 (CTAF)</b> 
------------------------	--	--------------------------	---



CATEGORY	A	B	C	D
LPV DA		282-½	257 (300-½)	
LNAV/VNAV DA		360-½	335 (400-½)	
LNAV MDA	420-½	395 (400-½)	420-⅝	395 (400-⅝)
<b>C</b> CIRCLING	480-1 455 (500-1)	500-1 475 (500-1)	500-1½ 475 (500-1½)	620-2 595 (600-2)

MIRL Rwy 17-35 

SC-5, 28 NOV 2024 to 26 DEC 2024

SC-5, 28 NOV 2024 to 26 DEC 2024