

APP CRS	Rwy Idg	<b>3215</b>
<b>021°</b>	TDZE	<b>9</b>
	Apt Elev	<b>11</b>

# RNAV (GPS) RWY 2

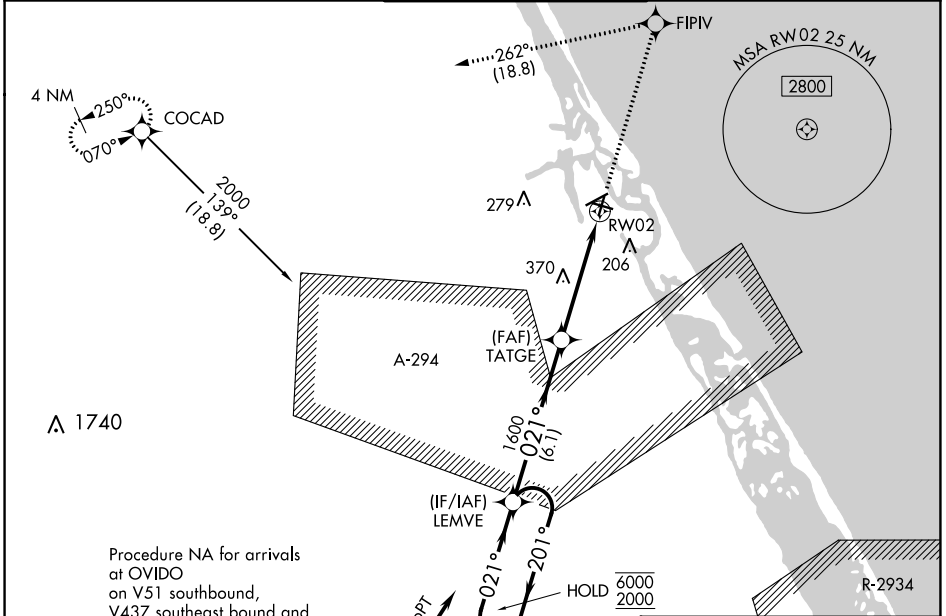
NEW SMYRNA BEACH MUNI (EVB)

RNP APCH-GPS

**⚠** Rwy 2 helicopter visibility reduction below 3/4 SM NA. VDP NA when using Daytona Beach altimeter setting. Straight-in Rwy 2 NA at night, Circling Rwy 7, 11, 25 NA at night.  
**⚠** When local altimeter setting not received, use Daytona Beach altimeter setting and increase all MDA 40 feet.

**MISSED APPROACH:** Climb to 2000 direct FIPV and left turn on track 262° to COCAD and hold.

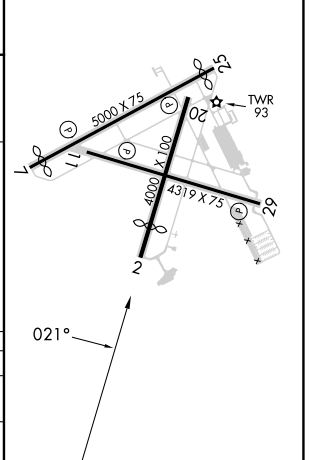
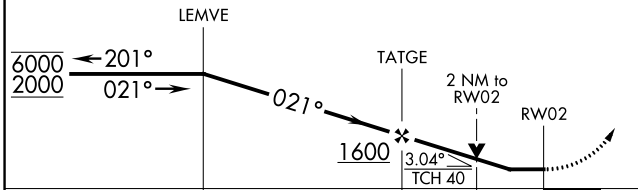
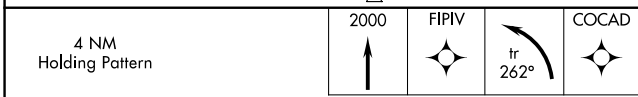
ATIS <b>124.625</b>	DAYTONA APP CON <b>125.35 322.3</b>	NEW SMYRNA BEACH TOWER ★ <b>119.675 (CTAF) 0</b>	GND CON <b>121.325</b>	UNICOM <b>122.95</b>
------------------------	--	---	---------------------------	-------------------------



SE-3, 28 NOV 2024 to 26 DEC 2024

SE-3, 28 NOV 2024 to 26 DEC 2024

ELEV 11	<b>D</b> TDZE 9
MIRL Rwy 7-25 and 11-29 <b>0</b>	



CATEGORY	A	B	C	D
LNAV MDA	700-1	691 (700-1)	700-2	691 (700-2)
<b>C</b> CIRCLING	700-1 1/4	689 (700-1 1/4)	700-2	700-2 1/4
			689 (700-2)	689 (700-2 1/4)