

WAAS CH 65903 W01A	APP CRS 007°	Rwy Idg 4206 TDZE 794 Apt Elev 798
--	------------------------	---

RNAV (GPS) RWY 1

SKYHAVEN (RCM)

RNP APCH - GPS.

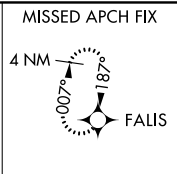
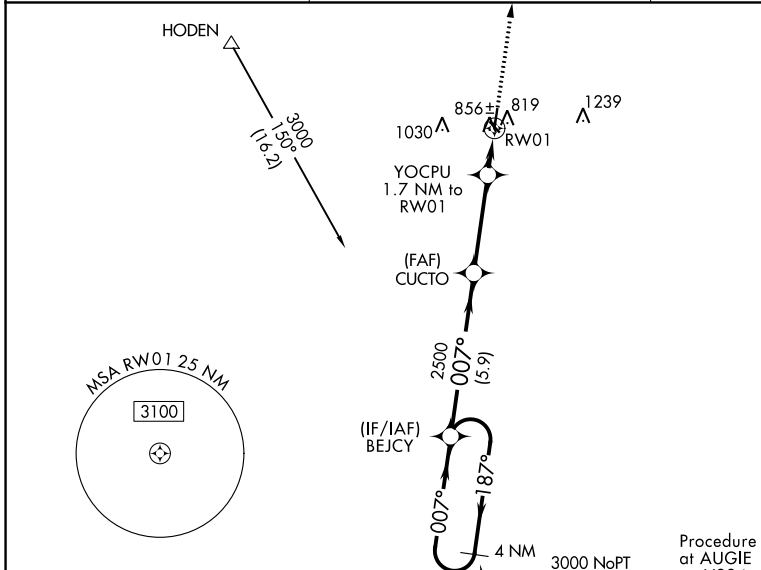
⚠ Circling Rwy 32 NA at night. Baro-VNAV NA when using Whiteman AFB altimeter setting. For uncompensated Baro-VNAV systems, LNAV/VNAV NA below -16°C or above 54°C. Rwy 1 helicopter visibility reduction below 3/4 SM NA. When local altimeter setting not received, use Knob Noster altimeter setting and increase LPV DA to 1083 feet and all visibilities 1/2 SM. Increase LNAV/VNAV DA to 1194 feet and all visibilities 1/2 SM. Increase all MDAs 40 feet and LNAV visibility Cat C 1/2 SM, and Circling visibility Cat C 1/2 SM.

MISSED APPROACH:
Climb to 3000 direct
FALIS and hold.

AWOS-3PT
119.575

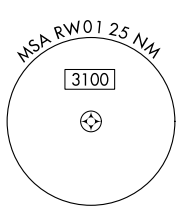
WHITEMAN APP CON *
127.45 284.0

UNICOM
123.0 (CTAF) 0



NC-3, 28 NOV 2024 to 26 DEC 2024

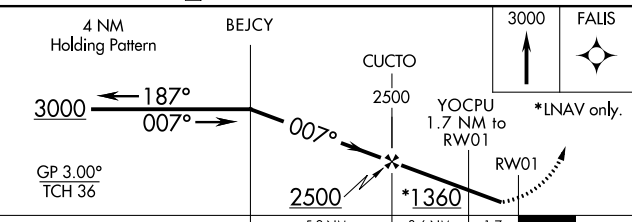
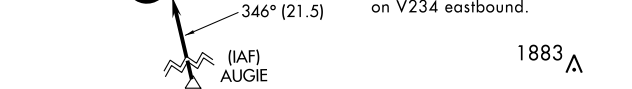
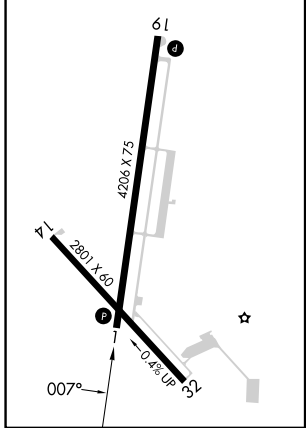
NC-3, 28 NOV 2024 to 26 DEC 2024



Procedure NA for arrivals at AUGIE on V234 eastbound.

ELEV 798 TDZE 794

REIL Rwy 1 and 19
REIL Rwy 14 and 32
MIRL Rwy 1-19 and 14-32



CATEGORY	A	B	C	D
LPV DA	1044-1	250 (300-1)		NA
LNAV/VNAV DA	1155-1¼	361 (400-1¼)		NA
LNAV MDA	1220-1	426 (500-1)	1220-1¼ 426 (500-1¼)	NA
C CIRCLING	1260-1 462 (500-1)	1340-1 542 (600-1)	1380-1½ 582 (600-1½)	NA