

| | | |
|--|------------------------|---|
| WAAS CH 45803 W19A | APP CRS 187° | Rwy Idg 4206 TDZE 795 Apt Elev 798 |
|--|------------------------|---|

RNAV (GPS) RWY 19

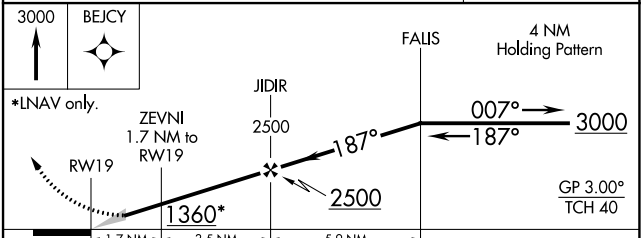
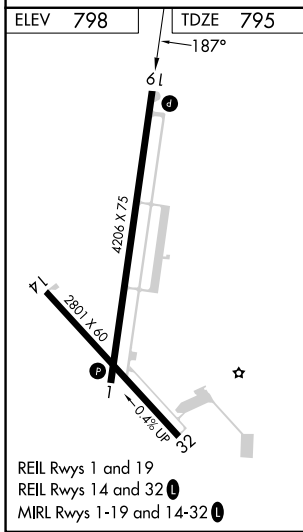
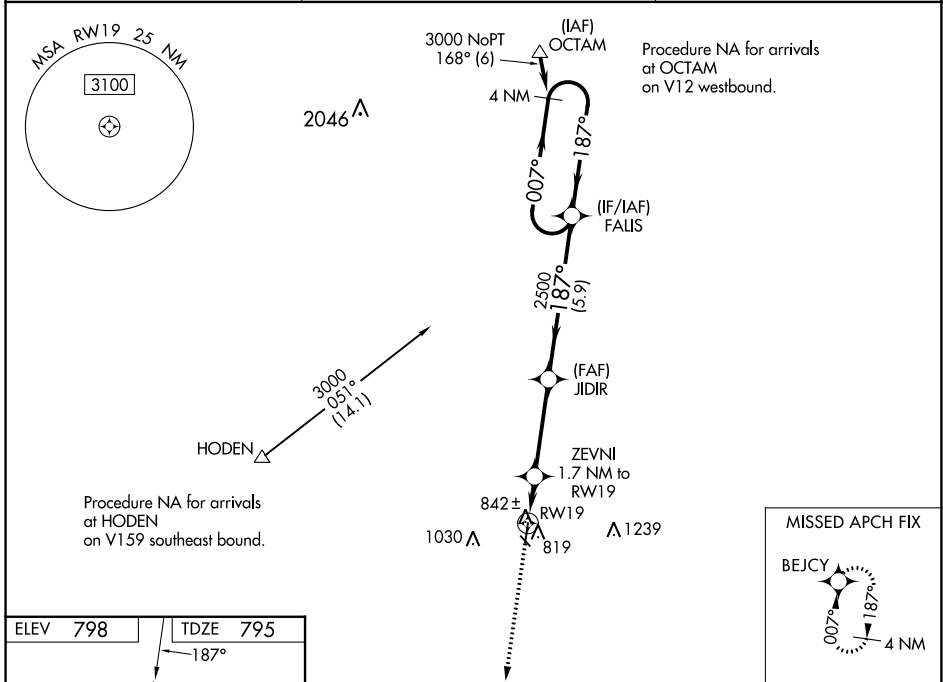
SKYHAVEN (RCM)

RNP APCH - GPS.

⚠ Baro-VNAV NA when using Whiteman AFB altimeter setting. For uncompensated Baro-VNAV systems, LNAV/VNAV NA below -16°C or above 54°C. When local altimeter setting not received, use Knob Noster altimeter setting and increase LPV DA to 1084 feet and all visibilities 1/8 SM. Increase LNAV/VNAV DA to 1139 feet and all visibilities 1/8 SM. Increase all MDAs 40 feet and Circling visibility Cat C 1/4 SM. Circling Rwy 32 NA at night.

MISSED APPROACH:
Climb to 3000 direct BEJCY and hold.

| | | |
|----------------------------|---|---------------------------------|
| AWOS-3PT 119.575 | WHITEMAN APP CON ★ 127.45 284.0 | UNICOM 123.0 (CTAF) 0 |
|----------------------------|---|---------------------------------|



| CATEGORY | A | B | C | D |
|-------------------|-----------------------|-----------------------|--|----|
| LPV DA | 1045-1 | 250 (300-1) | | NA |
| LNAV/VNAV DA | 1100-1 | 305 (400-1) | | NA |
| LNAV MDA | 1240-1 | 445 (500-1) | 1240-1 ^{3/8} 445 (500-1 ^{3/8}) | NA |
| C CIRCLING | 1260-1 462 (500-1) | 1340-1 542 (600-1) | 1380-1 ^{1/2} 582 (600-1 ^{1/2}) | NA |

NC-3, 28 NOV 2024 to 26 DEC 2024

NC-3, 28 NOV 2024 to 26 DEC 2024