

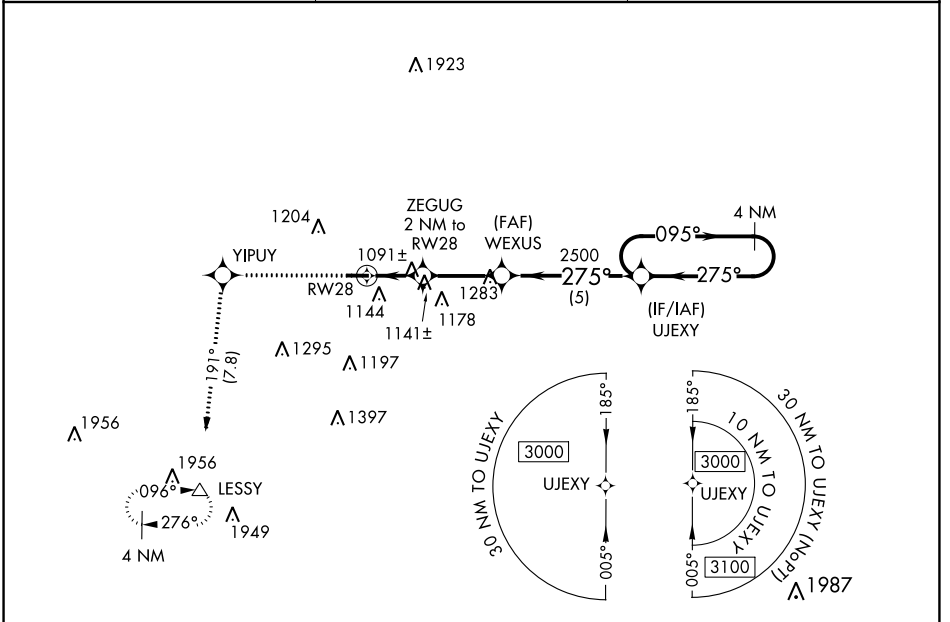
WAAS CH <b>53534</b> <b>W28A</b>	APP CRS <b>275°</b>	Rwy Idg TDZE Apt Elev	<b>4002</b> <b>918</b> <b>920</b>
--	------------------------	-----------------------------	---

# RNAV (GPS) RWY 28

MASON JEWETT FLD (TEW)

RNP APCH - GPS.	MISSED APPROACH: Climb to 3000 direct YIPUY and on track 191° direct LESSY and hold.
<p>▼ Rwy 28 helicopter visibility reduction below 3/4 SM NA.</p> <p>▲ Circling Rwy 10 NA at night.</p>	

AWOS-3P <b>119.425</b>	GREAT LAKES APP CON ★ <b>118.65 226.4</b>	UNICOM <b>122.7 (CTAF)</b>
---------------------------	--	-------------------------------



ELEV 920	TDZE 918
----------	----------

	3000	YIPUY	tr 191°	LESSY	Visual Segment - Obstacles.	4 NM Holding Pattern
CATEGORY	A	B	C	D		
LP MDA	1360-1	440 (500-1)			NA	
LNAV MDA	1400-1	480 (500-1)			NA	
CIRCLING	1500-1	580 (600-1)			NA	

EC-1, 28 NOV 2024 to 26 DEC 2024

EC-1, 28 NOV 2024 to 26 DEC 2024