

WAAS CH 78222 W05A	APP CRS 048°	Rwy Idg TDZE Apt Elev	5500 18 19
--	------------------------	-----------------------------	---------------------------------------

RNAV (GPS) RWY 5

CHESAPEAKE RGNL (CPK)

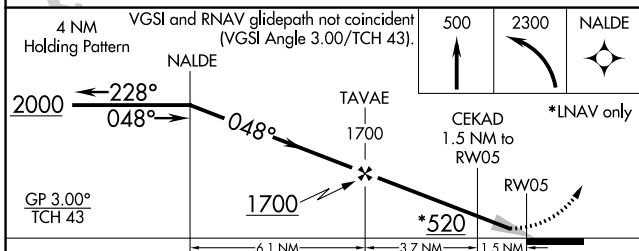
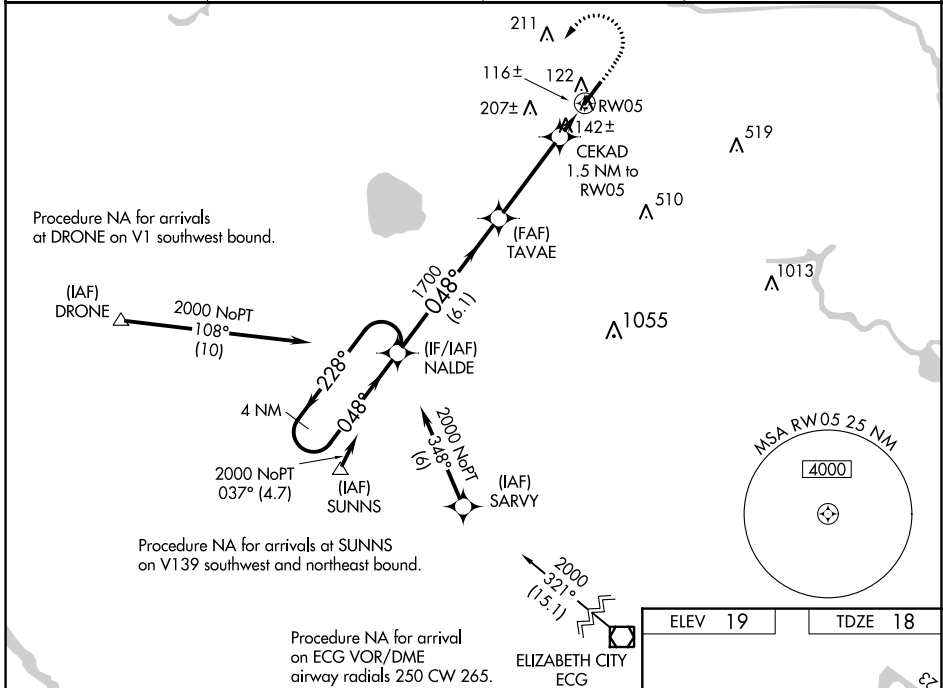
RNP APCH.

When local altimeter setting not received, use Norfolk Intl altimeter setting and increase all DA 36 feet and all MDA 40 feet; increase LNAV Cats C and D visibility 1/8 mile. Baro-VNAV NA when using Norfolk Intl altimeter setting. For uncompensated Baro-VNAV systems, LNAV/VNAV NA below -1.5°C (5°F) or above 43°C (109°F). For inoperative MALSR, increase LNAV/VNAV all Cats visibility to 1/8 mile.

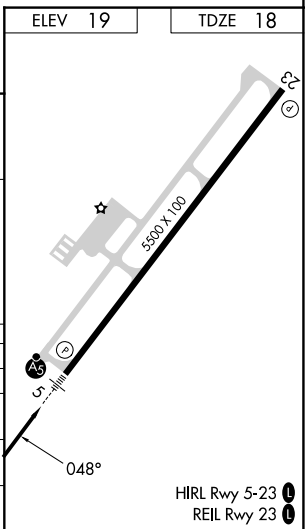


MISSED APPROACH:
Climb to 500 then climbing left turn to 2300 direct NALDE and hold.

AWOS-3 123.675	NORFOLK APP CON 118.9 353.7	GCO 135.075	UNICOM 123.075 (CTAF) 0
--------------------------	---------------------------------------	-----------------------	-----------------------------------



CATEGORY	A	B	C	D
LPV DA		218-1/2	200 (200-1/2)	
LNAV/VNAV DA		278-1/2	260 (300-1/2)	
LNAV MDA	400-1/2	382 (400-1/2)	400-5/8	382 (400-5/8)
CIRCLING	460-1 441 (500-1)	480-1 461 (500-1)	520-1 1/2 501 (600-1 1/2)	580-2 561 (600-2)



NE-3, 28 NOV 2024 to 26 DEC 2024

NE-3, 28 NOV 2024 to 26 DEC 2024