

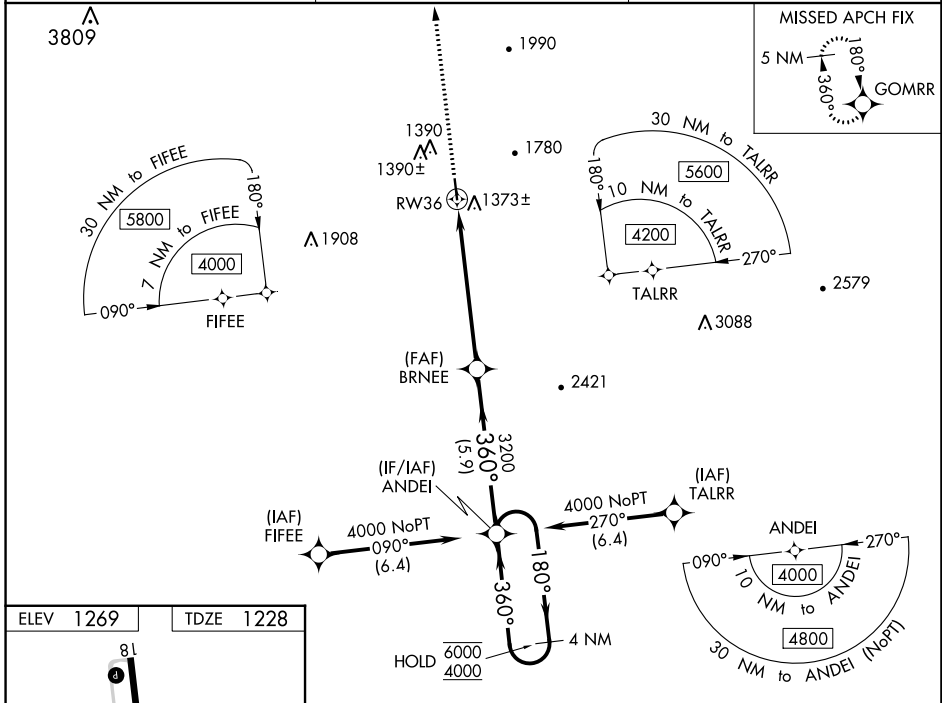
WAAS CH 99717 W36A	APP CRS 360°	Rwy Idg TDZE 1228 Apt Elev 1269
--	------------------------	---

RNAV (GPS) RWY 36

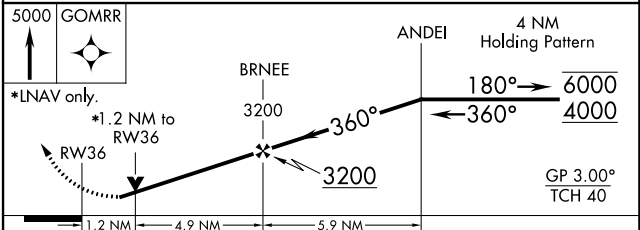
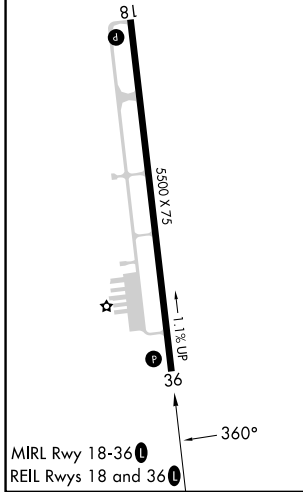
MOUNT AIRY/SURRY COUNTY (MWK)

RNP APCH.	MISSED APPROACH: Climb to 5000 direct GOMRR and hold.
<p>▼ Rwy 36 helicopter visibility reduction below 3/4 SM NA.</p> <p>▲ For uncompensated Baro-VNAV systems, LNAV/VNAV NA below -17°C or above 54°C.</p>	

AWOS-3 121.125	GREENSBORO APP CON 124.35 269.225	UNICOM 123.0 (CTAF) 0
--------------------------	---	---------------------------------



ELEV 1269	TDZE 1228
-----------	-----------



CATEGORY	A	B	C	D
LPV DA	1527-1 299 (300-1)			
LNAV/VNAV DA	1637-1½ 409 (400-1½)			
LNAV MDA	1640-1	412 (400-1)	1640-1½	412 (400-1½)
<input checked="" type="checkbox"/> CIRCLING	1940-1 671 (700-1)	2040-1 771 (800-1)	2180-2¾ 911 (1000-2¾)	2340-3 1071 (1100-3)

SE-2, 28 NOV 2024 to 26 DEC 2024

SE-2, 28 NOV 2024 to 26 DEC 2024