

# IZZO EIGHT DEPARTURE (RNAV)

AL-6494 (FAA)

CHANDLER MUNI (CHD)  
CHANDLER, ARIZONA

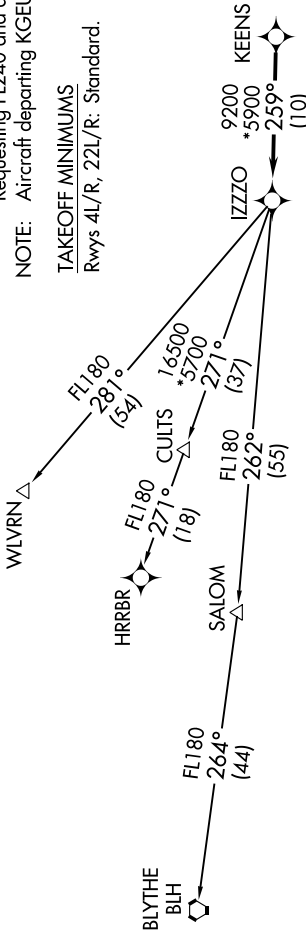
### TOP ALTITUDE: ASSIGNED BY ATC

PHOENIX DEP CON  
123.7 363.0  
ATIS  
128.325  
GND CON  
124.4  
CHANDLER TOWER \*  
126.1 (Rwy 4L-22R)  
133.1 (Rwy 4R-22L)

RNAV 1 - GPS.  
RADAR required.

- NOTE: Turbojets and turboprops only.  
 NOTE: Aircraft requesting FL220 and below must file BLYTHE Transition.  
 NOTE: Turbojets landing LAX, file WLVRN Transition.  
 NOTE: Aircraft landing other than LAX and turboprops landing at LAX: Requesting FL240 and above, file HRRBR Transition.  
 NOTE: Aircraft departing KGEU and KGYR ATC assigned only.

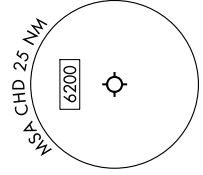
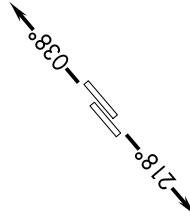
TAKEOFF MINIMUMS  
Rwys 4L/R, 22L/R: Standard.



### DEPARTURE ROUTE DESCRIPTION

TAKEOFF RUNWAYS 4L/R: Climb on track 038° or as assigned by ATC, thence. . . .  
 TAKEOFF RUNWAYS 22L/R: Climb on track 218° or as assigned by ATC, thence. . . .  
 . . . for RADAR vectors to KEENS, then on track 259° to IZZO, then on (transition).  
 Maintain ATC assigned altitude, expect filed altitude 3 minutes after departure.

- BLYTHE TRANSITION (IZZO8.BLH)  
 HRRBR TRANSITION (IZZO8.HRRBR)  
 WLVRN TRANSITION (IZZO8.WLVRN)



NOTE: Chart not to scale.

# IZZO EIGHT DEPARTURE (RNAV)