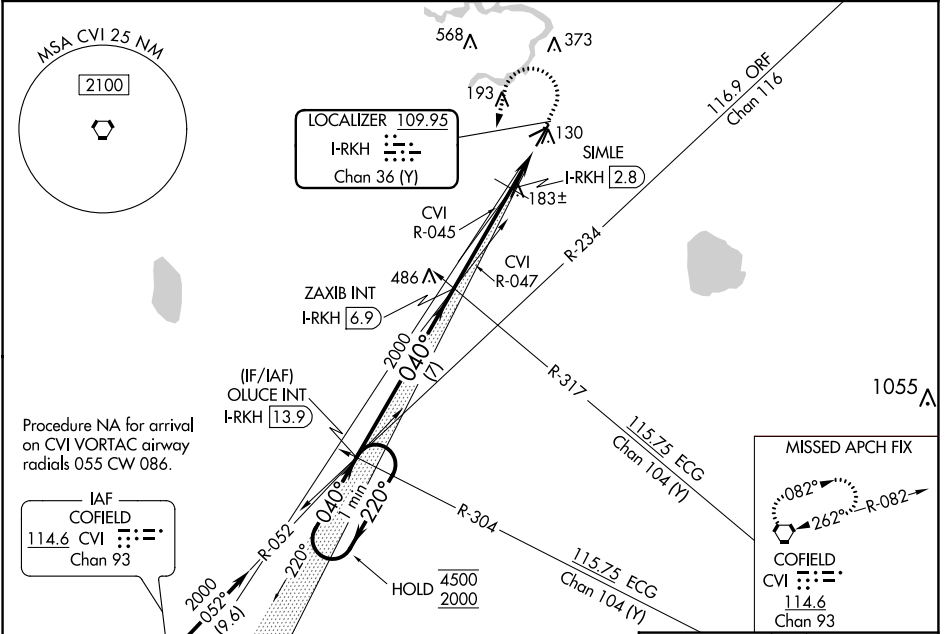


LOC/DME I-RKH	APP CRS	Rwy Idg	5007
109.95	040°	TDZE	66
Chan 36(Y)		Apt Elev	70

LOC RWY 4
SUFFOLK EXEC (SF'Q)

<p>▼</p> <p>▲ NA</p>	<p>MISSED APPROACH: Climb to 600 then climbing left turn to 2000 direct CVI VORTAC and hold.</p>	
<p>AWOS-3</p> <p>119.375</p>	<p>NORFOLK APP CON</p> <p>127.9 269.425</p>	<p>UNICOM</p> <p>122.7 (CTAF) 0</p>



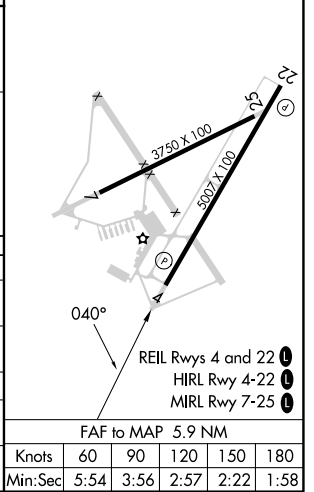
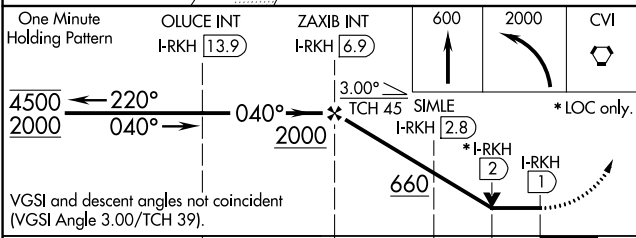
Procedure NA for arrival on CVI VORTAC airway radials 055 CW 086.

IAF
COFIELD
114.6 CVI [6.9]
Chan 93

MISSED APCH FIX
082°
262°
R-082

COFIELD
CVI [6.9]
114.6
Chan 93

ELEV 70	TDZE 66
---------	---------



CATEGORY	A	B	C	D
S-4	660-1	594 (600-1)	660-1¾	594 (600-1¾)
CIRCLING	660-1	590 (600-1)	680-1¾ 610 (700-1¾)	680-2 610 (700-2)
SIMLE FIX MINIMUMS (DME REQUIRED)				
S-4	440-1 374 (400-1)			
CIRCLING	500-1 430 (500-1)	560-1 490 (500-1)	680-1¾ 610 (700-1¾)	680-2 610 (700-2)

NE-3, 28 NOV 2024 to 26 DEC 2024

NE-3, 28 NOV 2024 to 26 DEC 2024