

APP CRS	Rwy Idg	3750
254°	TDZE	69
	Apt Elev	70

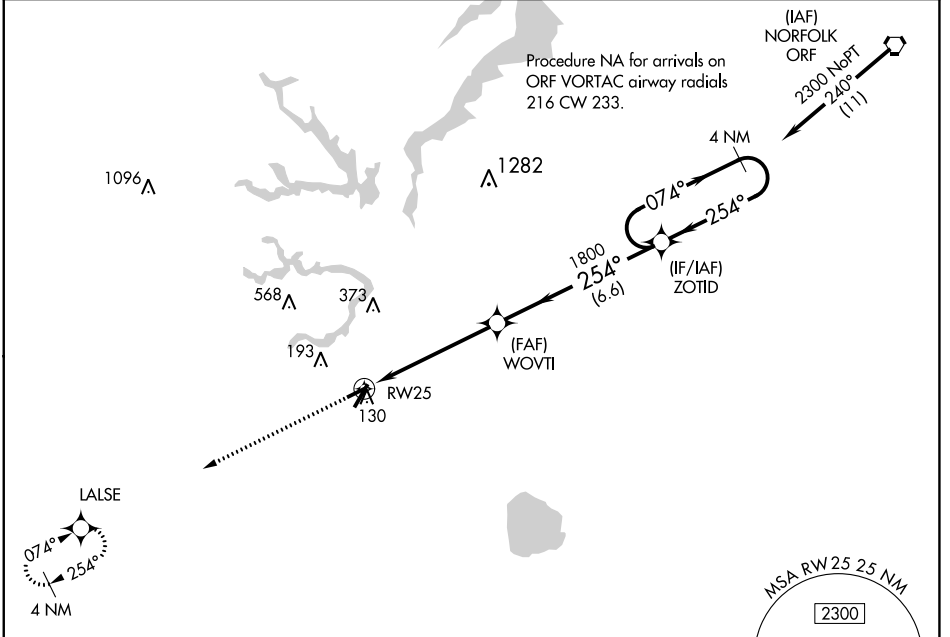
RNAV (GPS) RWY 25

SUFFOLK EXEC (SFQ)

⚠ DME/DME RNP-0.3 NA. Helicopter visibility reduction below 1 SM NA.
⚠ When local altimeter setting not received, use Norfolk Intl altimeter setting and increase all MDA 60 feet.

MISSED APPROACH: Climb to 2000 direct LALSE and hold.

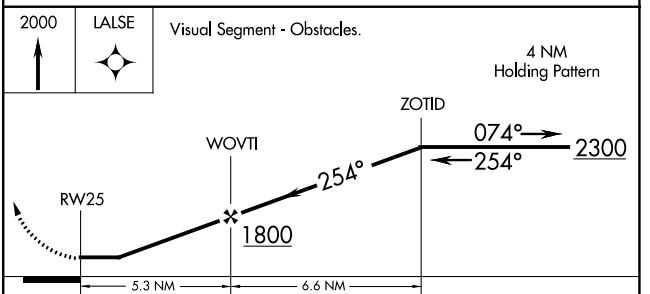
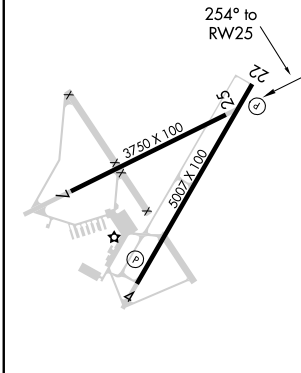
AWOS-3 119.375	NORFOLK APP CON 127.9 269.425	UNICOM 122.7 (CTAF)
--------------------------	---	-------------------------------



NE-3, 28 NOV 2024 to 26 DEC 2024

NE-3, 28 NOV 2024 to 26 DEC 2024

ELEV 70	TDZE 69
---------	---------



CATEGORY	A	B	C	D
LNAV MDA	480-1	411 (500-1)	NA	
C CIRCLING	500-1 430 (500-1)	560-1 490 (500-1)	NA	

SUFFOLK, VIRGINIA
 Amdt 1B 02MAR17

36°41'N-76°36'W

RNAV (GPS) RWY 25

SUFFOLK EXEC (SFQ)