

APP CRS <b>168°</b>	Rwy Idg <b>4000</b>
	TDZE <b>484</b>
	Apt Elev <b>484</b>

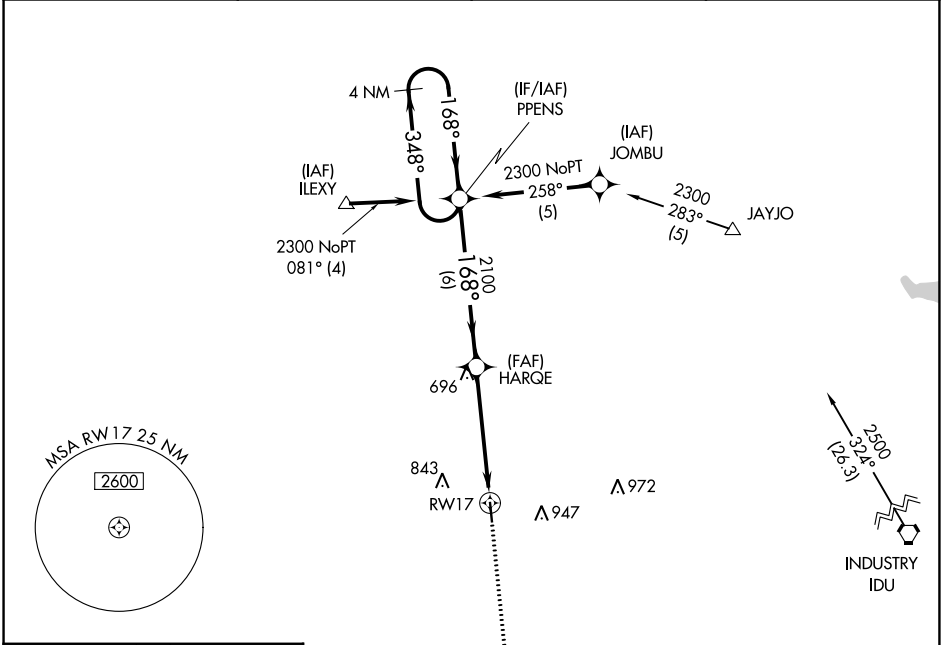
# RNAV (GPS) RWY 17

GIDDINGS-LEE COUNTY (GYB)

**⚠** DME/DME RNP-0.3 NA. Helicopter visibility reduction below 1 SM NA.  
**⚠** Procedure NA at night. When local altimeter setting not received, use Austin-Bergstrom Intl altimeter setting and increase all MDA 100 feet; increase visibility Cat C ¼ SM.

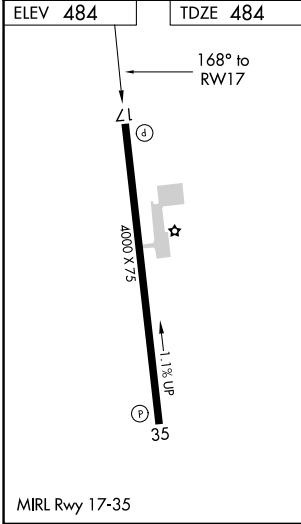
**MISSED APPROACH:**  
 Climb to 2500 direct RAMOS and hold.

<b>AWOS-3</b> <b>119.225</b>	<b>AUSTIN APP CON</b> <b>127.225 317.65</b>	<b>UNICOM</b> <b>123.05 (CTAF)</b>
---------------------------------	--	---------------------------------------



SC-5, 28 NOV 2024 to 26 DEC 2024

SC-5, 28 NOV 2024 to 26 DEC 2024



**MISSED APCH FIX**  
 RAMOS (2500) 4 NM

**4 NM Holding Pattern**  
 PPENS (2300) 348° / 168°

**VGSI and descent angles not coincident (VGSI Angle 3.75/TCH 34).**

**2500 RAMOS**

**HARQE** (2100) 168°

**RW17** (2100) 3.04° TCH 40

6 NM | 4.9 NM

CATEGORY	A	B	C	D
LNAV MDA	940-1	456 (500-1)	940-1¼ 456 (500-1¼)	NA
CIRCLING	940-1 456 (500-1)	1160-1 676 (700-1)	1240-2¼ 756 (800-2¼)	NA