

LOC/DME I-JNX <b>111.15</b> Chan <b>48</b> (Y)	APP CRS <b>032°</b>	Rwy Idg <b>5500</b> TDZE <b>147</b> Apt Elev <b>164</b>
--	------------------------	---

# ILS Y or LOC Y RWY 3

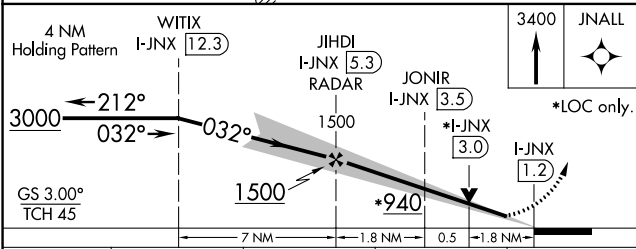
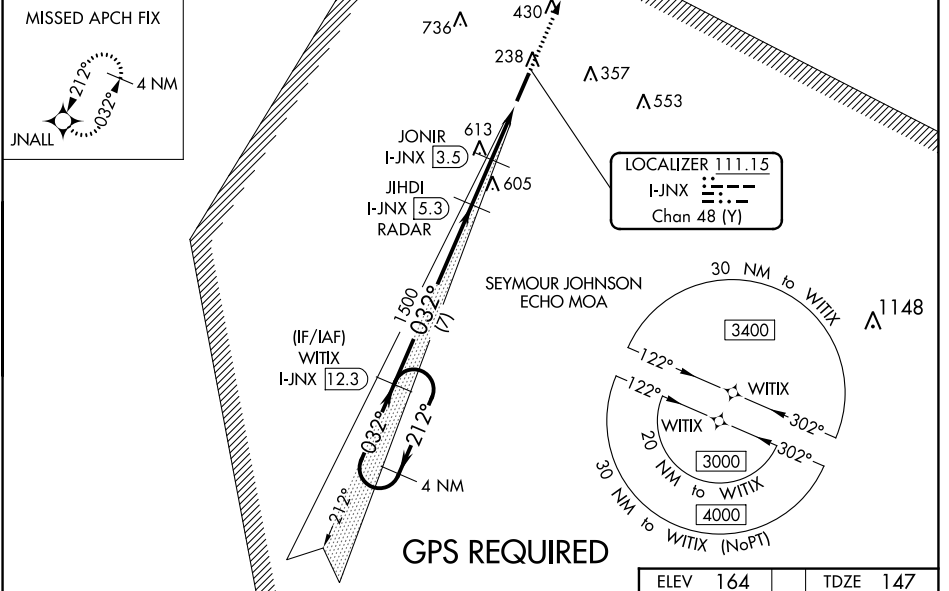
JOHNSTON RGNL (JNX)

**NA** GPS required. VDP NA with Erwin altimeter setting. When local altimeter setting not received, use Erwin altimeter setting: increase DA to 447 feet, increase all MDA 60 feet and S-LOC 3 Cat C/D and Circling Cat A visibility ¼ mile, and JONIR fix minimums S-LOC 3 Cat C/D visibility ½ mile and Circling Cat C ¼ mile. For inop MALSR, increase S-LOC 3 Cat C/D visibility to 2½ mile and JONIR fix minimums S-LOC 3 Cat C/D to 1¾ mile. For inop MALSR when using Erwin altimeter setting, increase S-ILS all Cats visibility to 1 mile.

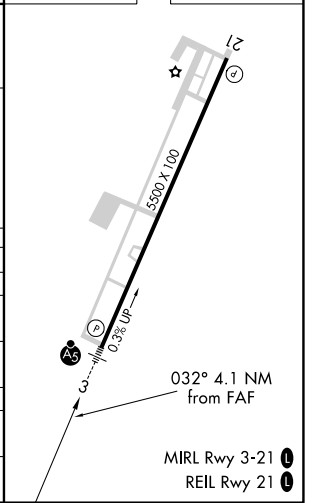
**MALSR**

**MISSED APPROACH:** Climb to 3400 direct JNALL and hold, continue climb-in-hold to 3400.

AWOS-3 <b>120.225</b>	RALEIGH APP CON <b>125.3 353.675</b>	GCO <b>135.075</b>	UNICOM <b>122.725</b> (CTAF) <b>0</b>
--------------------------	---	-----------------------	--



CATEGORY	A	B	C	D
S-ILS 3	397-½ 250 (300-½)			
S-LOC 3	940-½ 793 (800-½)	940-¾ 793 (800-¾)	940-1¼ 776 (800-2½)	793 (800-1¾)
CIRCLING	940-1 776 (800-1)	940-1¼ 776 (800-1¼)	940-2½ 776 (800-2½)	1100-3 936 (1000-3)
JONIR FIX MINIMUMS				
S-LOC 3	780-½	633 (700-½)	780-1¾	633 (700-1¾)
CIRCLING	780-1	616 (700-1)	920-2¼ 756 (800-2¼)	1100-3 936 (1000-3)



SE-2, 28 NOV 2024 to 26 DEC 2024

SE-2, 28 NOV 2024 to 26 DEC 2024