

WAAS CH <b>86422</b> <b>W29A</b>	APP CRS <b>290°</b>	Rwy Idg <b>4801</b> TDZE <b>870</b> Apt Elev <b>871</b>
--	------------------------	---

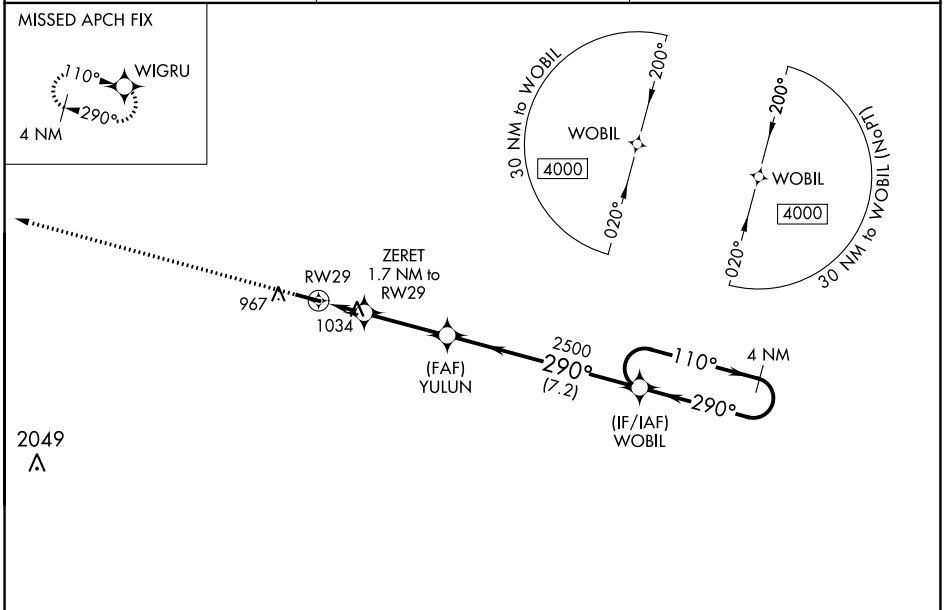
# RNAV (GPS) RWY 29

LEBANON SPRINGFIELD-GEORGE HOERTER FLD (6I2)

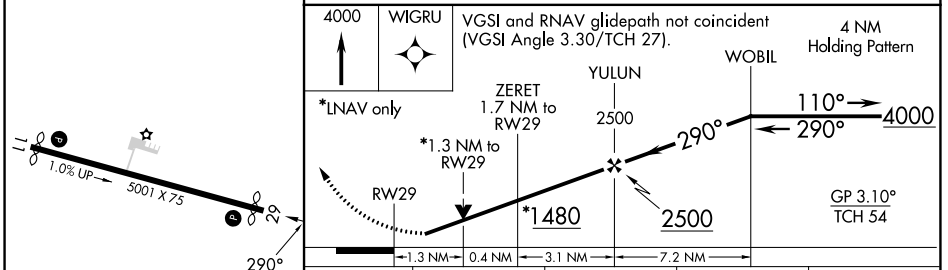
**⚠** For uncompensated Baro-VNAV systems, LNAV/VNAV NA below -16°C (4°F) or above 45°C (114°F).  
**⚠** When local altimeter setting not received, use Danville altimeter setting and increase all DA 74 feet and all MDA 80 feet; increase LPV all Cats and LNAV Cats C/D visibility 1/8 mile; LNAV/VNAV all Cats visibility 3/8 mile and Circling Cat D visibility 1/4 mile. DME/DME RNP-0.3 NA. Helicopter visibility reduction below 3/4 SM NA. Baro-VNAV and VDP NA when using Danville altimeter setting.

MISSED APPROACH: Climb to 4000 direct WIGRU and hold.

AWOS-3P <b>119.725</b>	LOUISVILLE APP CON <b>132.075 327.0</b>	UNICOM <b>122.8 (CTAF)</b>
---------------------------	--	-------------------------------



ELEV 871	TDZE 870
----------	----------



4000	WIGRU	VGS1 and RNAV glidepath not coincident (VGS1 Angle 3.30/TCH 27).		4 NM Holding Pattern
*LNAV only	ZERET 1.7 NM to RWY 29	YULUN 2500	WOBIL	110° → 4000
	*1.3 NM to RWY 29	*1480	2500	← 290°
				GP 3.10° TCH 54

CATEGORY	A	B	C	D
LPV DA		1152-1	282 (300-1)	
LNAV/VNAV DA		1279-1¼	409 (500-1¼)	
LNAV MDA	1300-1	430 (500-1)	1300-1¼	430 (500-1¼)
<b>C</b> CIRCLING	1320-1 449 (500-1)	1340-1 469 (500-1)	1360-1½ 489 (500-1½)	1500-2 629 (700-2)

MIRL Rwy 11-29  
REIL Rws 11 and 29

SE-1, 28 NOV 2024 to 26 DEC 2024

SE-1, 28 NOV 2024 to 26 DEC 2024