

WAAS CH <b>90140</b> <b>W12A</b>	APP CRS <b>128°</b>	Rwy Idg TDZE Apt Elev	<b>4652</b> <b>2706</b> <b>2706</b>
----------------------------------------	------------------------	-----------------------------	-------------------------------------------

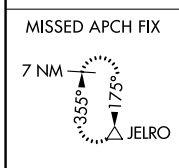
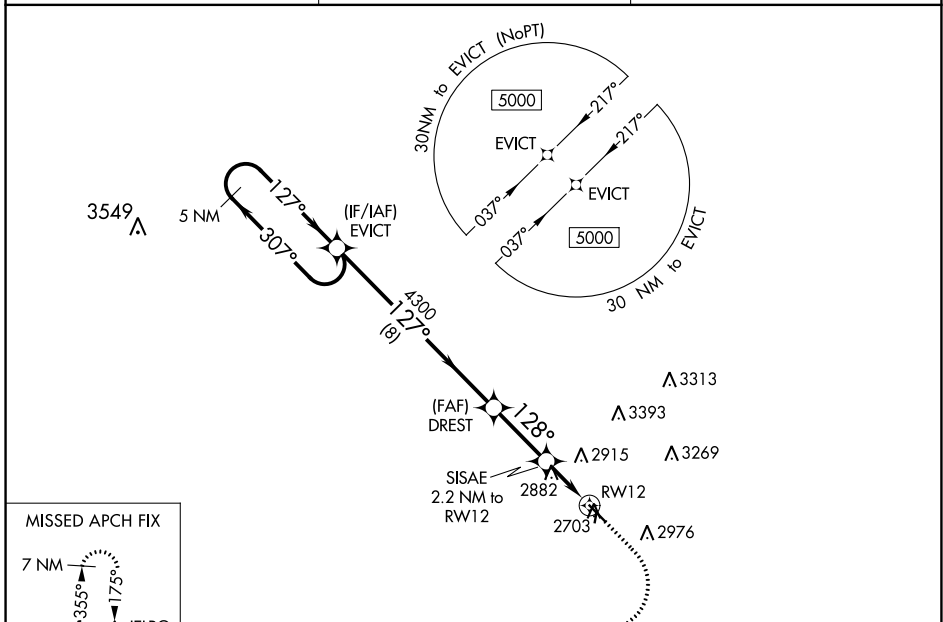
# RNAV (GPS) RWY 12

HETTINGER/JB LINDQUIST RGNL (HEI)

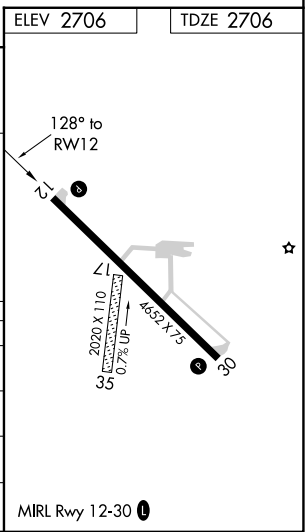
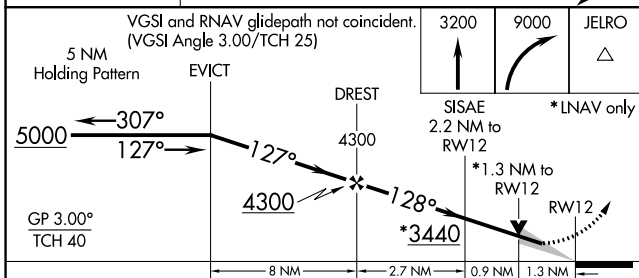
**⚠** For uncompensated Baro-VNAV systems, LNAV/VNAV NA below -20°C (-4°F) or above 54°C (130°F). DME/DME RNP-0.3 NA. Circling NA northeast of Rwy 12-30. Circling NA to Rwys 17 and 35.

**MISSED APPROACH:** Climb to 3200, then climbing right turn to 9000 direct JELRO and hold, continue climb-in-hold to 9000.

ASOS <b>119.925</b>	MINNEAPOLIS CENTER <b>124.25 236.825</b>	UNICOM <b>122.8 (CTAF)</b>
------------------------	---------------------------------------------	-------------------------------



ELEV 2706	TDZE 2706
-----------	-----------



CATEGORY	A	B	C	D
LPV DA	2956-1		250 (300-1)	
LNAV/VNAV DA	3168-1 5/8		462 (500-1 5/8)	
LNAV MDA	3140-1	434 (500-1)	3140-1 1/4	434 (500-1 1/4)
<b>C</b> CIRCLING	3180-1 474 (500-1)	3240-1 534 (600-1)	3240-1 1/2 534 (600-1 1/2)	3460-2 1/2 754 (800-2 1/2)

NC-1, 28 NOV 2024 to 26 DEC 2024

NC-1, 28 NOV 2024 to 26 DEC 2024