

WAAS CH <b>99730</b> <b>W21A</b>	APP CRS <b>217°</b>	Rwy Idg TDZE Apt Elev	<b>5007</b> <b>1372</b> <b>1372</b>
--	------------------------	-----------------------------	---

# RNAV (GPS) RWY 21

LIVINGSTON MUNI (8A.3)

RNP APCH - GPS.

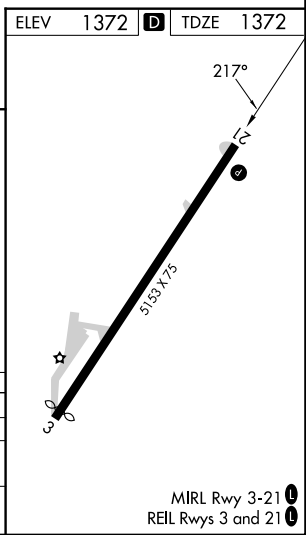
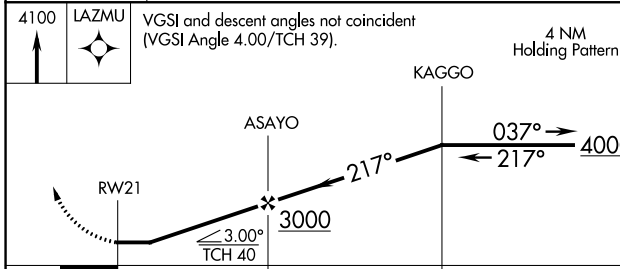
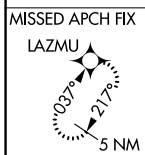
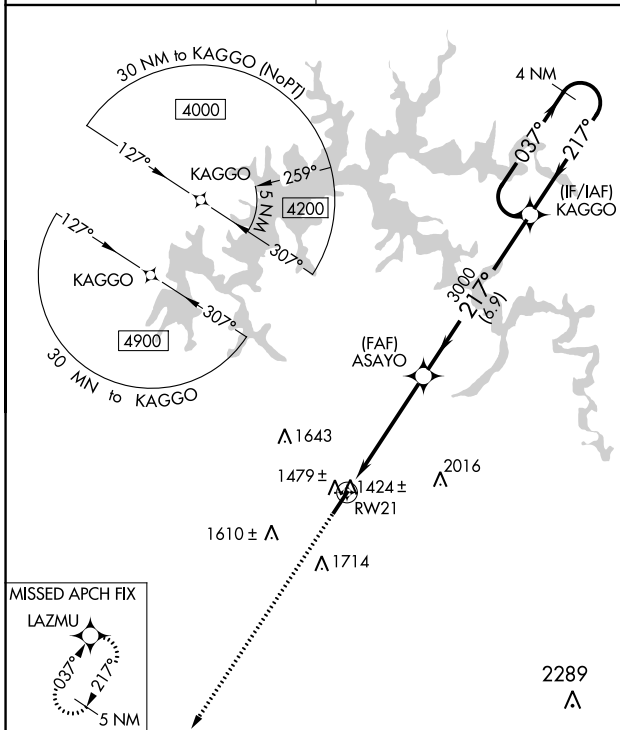
**▼** Circling Rwy 3 NA at night. When local altimeter setting not received, use Crossville altimeter setting and increase all MDA 140 feet; increase LP and LNAV Cats C/D visibility 3/8 mile; increase Circling Cat B visibility 1/4 mile and Circling Cats C/D visibility 1/2 mile. Rwy 21 helicopter visibility reduction below 3/4 SM NA.

**MISSED APPROACH:**  
Climb to 4100 direct LAZMU and hold.

AWOS-3  
**126.175**

INDIANAPOLIS CENTER  
**124.625 371.925**

UNICOM  
**122.8 (CTAF) 0**



CATEGORY	A	B	C	D
LP MDA	1700-1		328 (400-1)	
LNAV MDA	1760-1	388 (400-1)	1760-1 1/8	388 (400-1 1/8)
CIRCLING	1880-1 508 (600-1)	2080-1 708 (800-1)	2080-2 708 (800-2)	2360-3 988 (1000-3)

SE-1, 28 NOV 2024 to 26 DEC 2024

SE-1, 28 NOV 2024 to 26 DEC 2024