

APP CRS 235°	Rwy Idg 5003
	TDZE 1458
	Apt Elev 1458

RNAV (GPS) RWY 24

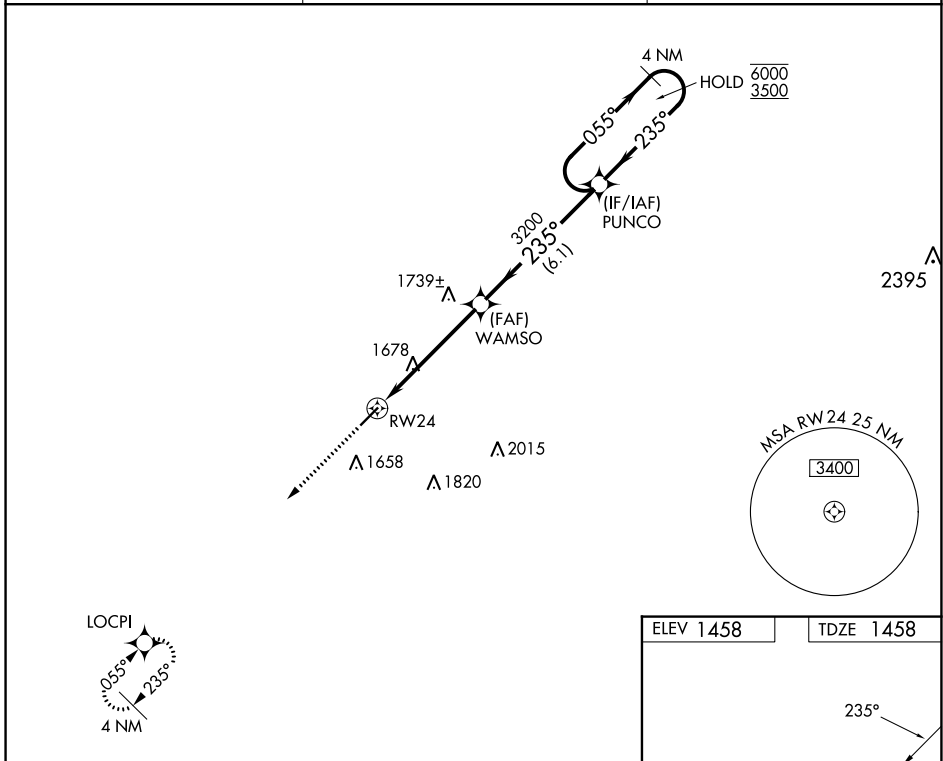
CLARION COUNTY (AXQ)

RNP APCH.

⚠ **NA** Rwy 24 helicopter visibility reduction below 3/4 SM NA. VDP NA when using Dubois altimeter setting. When local altimeter setting not received, use Dubois altimeter setting and increase all MDA 120 feet and LNAV Cat B/C/D and Circling Cat C visibility 5/8 SM, Circling Cat B visibility 1/4 SM, Cat D visibility 1/2 SM.

MISSED APPROACH:
Climb to 3100 direct
LOCP1 and hold.

AWOS-3 118.275	CLEVELAND CENTER 126.725 291.65	UNICOM 122.8 (CTAF) 0
--------------------------	---	---------------------------------

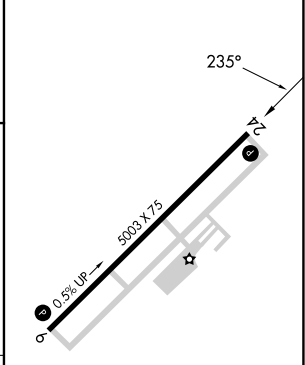
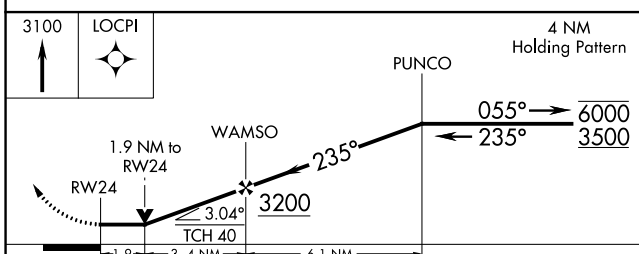


NE-4, 28 NOV 2024 to 26 DEC 2024

NE-4, 28 NOV 2024 to 26 DEC 2024



ELEV 1458	TDZE 1458
-----------	-----------



CATEGORY	A	B	C	D
LNAV MDA	2100-1	642 (700-1)	2100-1 7/8 642 (700-1 7/8)	2100-2 642 (700-2)
CIRCLING	2100-1	642 (700-1)	2100-1 7/8 642 (700-1 7/8)	2180-2 1/4 722 (800-2 1/4)

MIRL Rwy 6-24
REIL Rwys 6 and 24