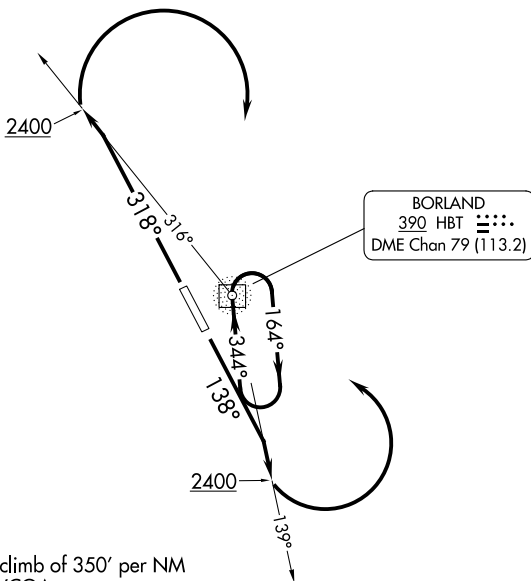


(HBT2.HBT) 24025

# BORLAND TWO DEPARTURE (OBSTACLE)

SAND POINT (SDP) (PASD)  
AL-6537 (FAA)  
SAND POINT, ALASKA

ANCHORAGE CENTER  
125.35 346.3  
COLD BAY RADIO  
122.3  
CTAF  
122.3



NOTE: ADF required.

### TAKEOFF MINIMUMS

Rwy 14: Standard.

Rwy 32: Standard with minimum climb of 350' per NM to 1200, or 2600-3 for VCOA.

### TAKEOFF OBSTACLE NOTES

- Rwy 32: Ships beginning 1493' from DER, crossing extended runway centerline, 100' MSL.
- Vegetation beginning 1.4 NM from DER, 392' right of centerline, up to 6' AGL/256' MSL.
- Vegetation, terrain beginning 1.5 NM from DER, 534' right of centerline, up to 296' MSL.
- Vegetation beginning 1.6 NM from DER, 995' right of centerline, up to 7' AGL/315' MSL.
- Terrain, vegetation beginning 1.7 NM from DER, on and left of centerline, up to 410' MSL.
- Vegetation beginning 1.7 NM from DER, 1493' right of centerline, up to 6' AGL/351' MSL.
- Vegetation beginning 1.9 NM from DER, 161' right of centerline, up to 7' AGL/401' MSL.
- Terrain, vegetation beginning 2 NM from DER, 326' right of centerline, up to 456' MSL.
- Vegetation 2.1 NM from DER, 2753' right of centerline, 5' AGL/478' MSL.
- Terrain, vegetation beginning 2.2 NM from DER, 388' right of centerline, up to 619' MSL.
- Terrain 2.5 NM from DER, 1994' right of centerline, 472' MSL.

NOTE: Chart not to scale.

### DEPARTURE ROUTE DESCRIPTION

**TAKEOFF RUNWAY 14:** Climb on heading 138° to intercept bearing 139° from HBT NDB to 2400 then climbing left turn direct HBT NDB, thence. . . .

**TAKEOFF RUNWAY 32:** Climb on heading 318° to intercept bearing 316° from HBT NDB to 2400 then climbing right turn direct HBT NDB, or for VCOA, cross Sand Point Airport at or above 2500, thence. . . .

**VCOA RUNWAY 32:** Obtain ATC approval for VCOA when requesting IFR clearance. Climb in visual conditions to cross Sand Point Airport at or above 2500 then climb direct HBT NDB, thence. . . .

. . . .continue climb in HBT NDB holding pattern to 10000 before proceeding on course.

# BORLAND TWO DEPARTURE (OBSTACLE)

(HBT2.HBT) 13SEP18

SAND POINT, ALASKA  
SAND POINT (SDP) (PASD)

AK, 31 OCT 2024 to 26 DEC 2024

AK, 31 OCT 2024 to 26 DEC 2024