

NDB/DME HBT <b>390</b>	APP CRS <b>339°</b>	Rwy ldg TDZE Apt Elev	<b>4099</b> <b>24</b> <b>24</b>
Chan <b>79 (113.2)</b>			

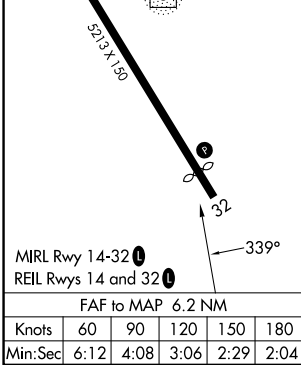
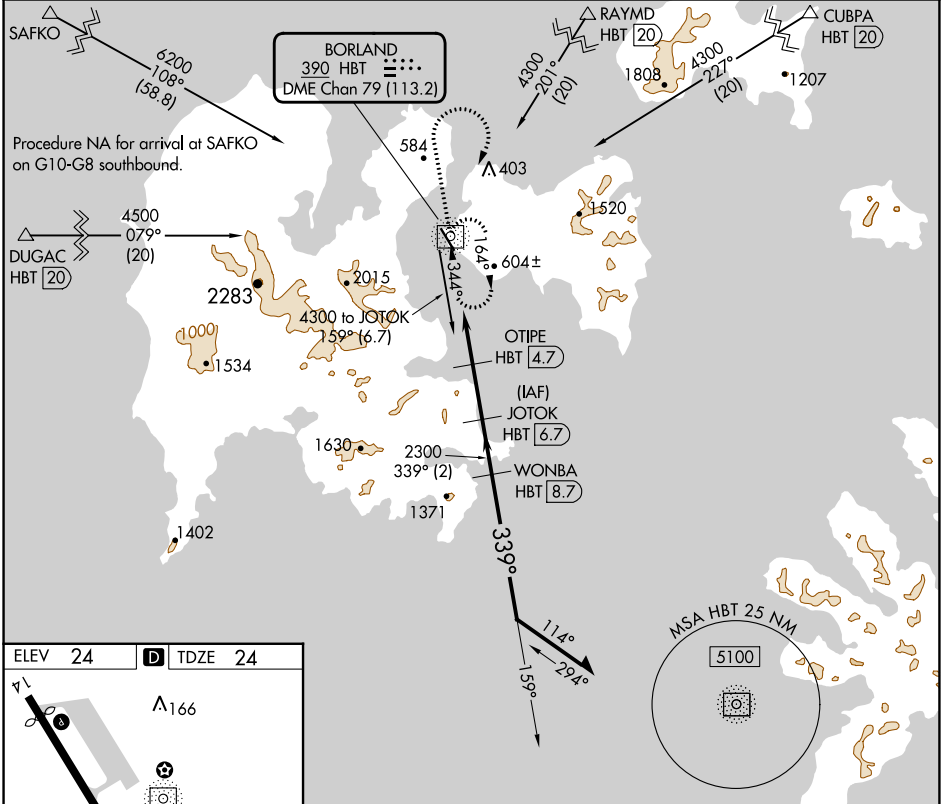
# NDB RWY 32

SAND POINT (SDP) (PASD)

**⚠** Circling NA northeast of Rwy 14-32. DME required.

**⚠** MISSED APPROACH: Climb to 1800 then climbing right turn to 4300 direct HBT NDB and hold, continue climb-in-hold to 4300.

AWOS-3P <b>134.85</b>	ANCHORAGE CENTER <b>125.35 346.3</b>	CLNC DEL <b>122.3 (CTAF) 0</b>	COLD BAY RADIO <b>122.3</b>	UNICOM <b>122.8</b>
--------------------------	---	-----------------------------------	--------------------------------	------------------------



1800	4300	HBT	JOTOK HBT (6.7)		Remain within 10 NM
HBT NDB/DME (0.4)	HBT (2.7)	OTIFE HBT (4.7)	WONBA HBT (8.7)	3100	
3.47° TCH 36		1620	2300	2900	
2.2 NM		2 NM	2 NM	2 NM	
CATEGORY	A	B	C	D	
S-32	920-1¼	896 (900-1¼)	920-2½	896 (900-2½)	
<b>C</b> CIRCLING	920-1¼	896 (900-1¼)	1520-3 1496 (1500-3)	2200-3 2176 (2200-3)	

AK, 31 OCT 2024 to 26 DEC 2024

AK, 31 OCT 2024 to 26 DEC 2024