

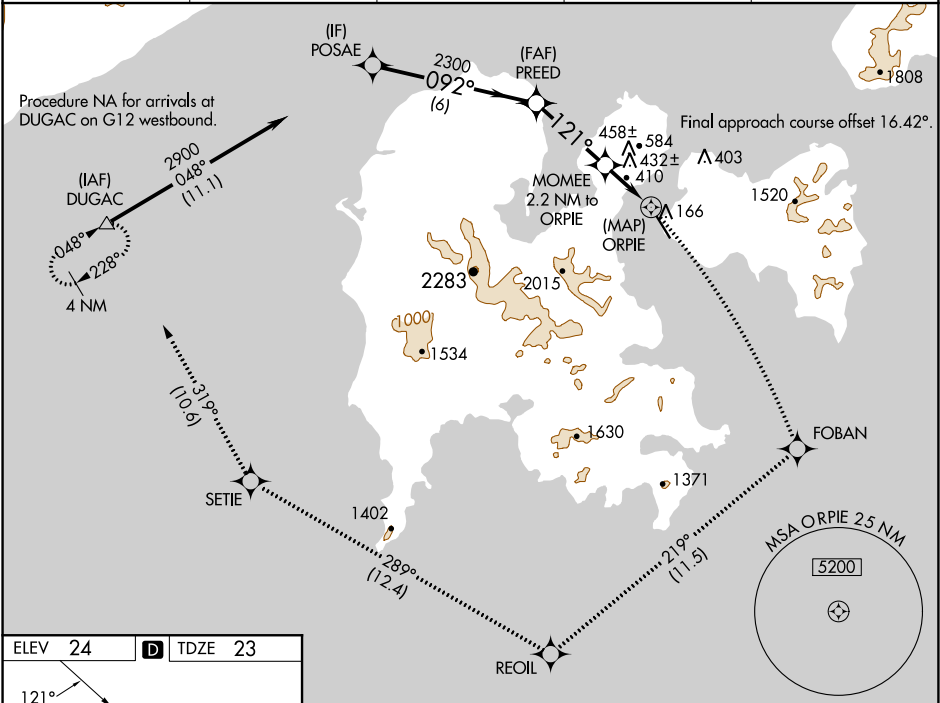
WAAS CH 56245 W14A	APP CRS 121°	Rwy Idg 4099 TDZE 23 Apt Elev 24
--	------------------------	---

RNAV (GPS) Z RWY 14

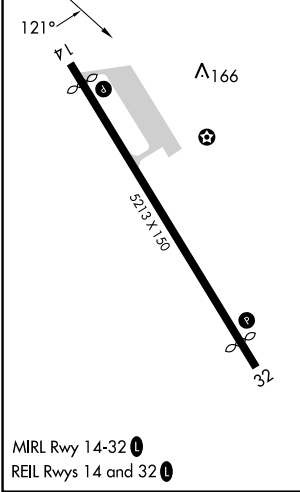
SAND POINT (SDP) (PASD)

RNP APCH-GPS.	MISSED APPROACH: Climbing right turn to 5000 on the RNAV missed approach route to DUGAC and hold.
Circling NA northeast of Rwy 14-32.	

AWOS-3P 134.85	ANCHORAGE CENTER 125.35 346.3	CLNC DEL 122.3 (CTAF) 0	COLD BAY RADIO 122.3	UNICOM 122.8
--------------------------	---	-----------------------------------	--------------------------------	------------------------



ELEV 24	D	TDZE 23
----------------	----------	----------------



MIRL Rwy 14-32
REIL Rws 14 and 32

5000	FOBAN	REOIL	SETIE	DUGAC
	tr 219°	tr 289°	tr 319°	

POSAE $\xrightarrow{2900}$ PREED $\xrightarrow{092^\circ}$ MOMEE $\xrightarrow{121^\circ}$ ORPIE $\xrightarrow{1080}$ SETIE $\xrightarrow{166^\circ}$ FOBAN $\xrightarrow{166^\circ}$ REOIL $\xrightarrow{166^\circ}$ DUGAC

VGSIs and descent angles not coincident (VGSIs Angle 3.60/TCH 31).
 MOMEE 2.2 NM to ORPIE
 1.1 NM to ORPIE

	6 NM	3.3 NM	1.1 NM	1.1 NM	0.5
CATEGORY	A	B	C	D	
LP MDA	660-1	637 (700-1)	660-1 $\frac{3}{4}$	637 (700-1 $\frac{3}{4}$)	
LNAV MDA	820-1 797 (800-1)	820-1 $\frac{1}{4}$ 797 (800-1 $\frac{1}{4}$)	820-2 $\frac{1}{2}$	797 (800-2 $\frac{1}{2}$)	
C CIRCLING	820-1 796 (800-1)	820-1 $\frac{1}{4}$ 796 (800-1 $\frac{1}{4}$)	1580-3 1556 (1600-3)	2240-3 2216 (2300-3)	

AK, 31 OCT 2024 to 26 DEC 2024

AK, 31 OCT 2024 to 26 DEC 2024