

WAAS CH 50533 W13A	APP CRS 127°	Rwy Idg TDZE Apt Elev	3398 964 964
--	------------------------	-----------------------------	---

RNAV (GPS) RWY 13

ALBIA MUNI (4C8)

RNP APCH.

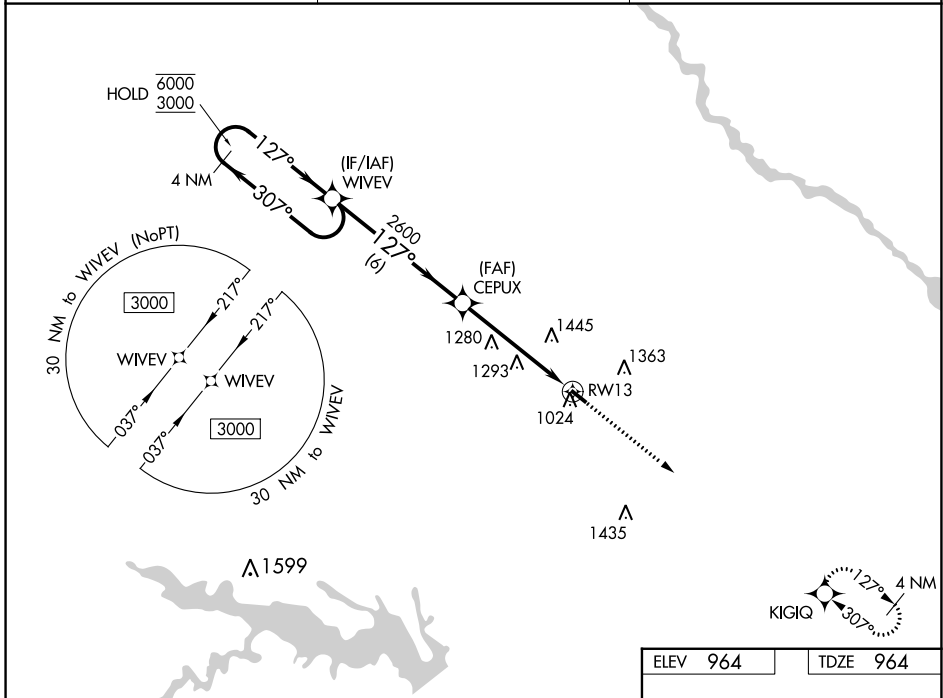
▼ Rwy 13 helicopter visibility reduction below 3/4 SM NA. Baro-VNAV NA. Use **▲ NA** Ottumwa altimeter setting, when not received use Centerville altimeter setting.

MISSED APPROACH: Climb to 3000 direct KIGIQ and hold.

OTM ASOS
124.175

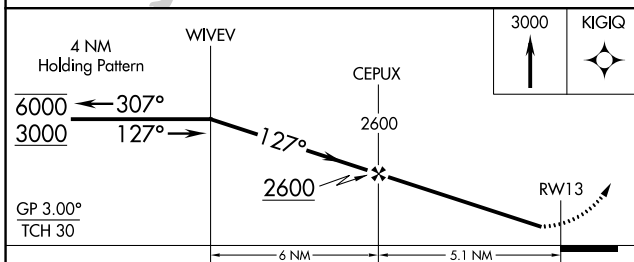
CHICAGO CENTER
118.15 335.575

UNICOM
122.8 (CTAF) 0



NC-3, 28 NOV 2024 to 26 DEC 2024

NC-3, 28 NOV 2024 to 26 DEC 2024



ELEV 964	TDZE 964
----------	----------

The diagram shows the final approach from CEPUX to RWY 13. It includes a 3000-foot KIGIQ holding point and a 3398 x 60 foot obstacle. The approach is a 3° glide path to RWY 13.

CATEGORY	A	B	C	D
LPV DA	1268-1	304 (400-1)		NA
LNAV/VNAV DA	1291-1 1/8	327 (400-1 1/8)		NA
LNAV MDA	1600-1	636 (700-1)		NA
C CIRCLING	1600-1 636 (700-1)	1760-1 796 (800-1)		NA

MIRL Rwy 13-31
REIL Rws 13 and 31 **0**