

WAAS CH 82428 W03A	APP CRS 031°	Rwy Idg 5003 TDZE 473 Apt Elev 473
--	------------------------	---

RNAV (GPS) RWY 3

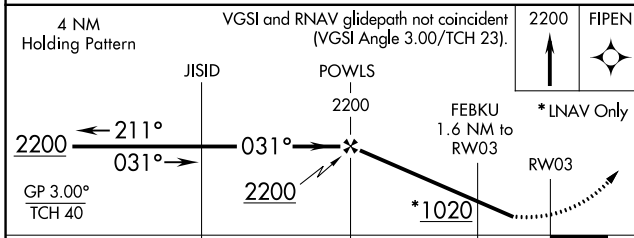
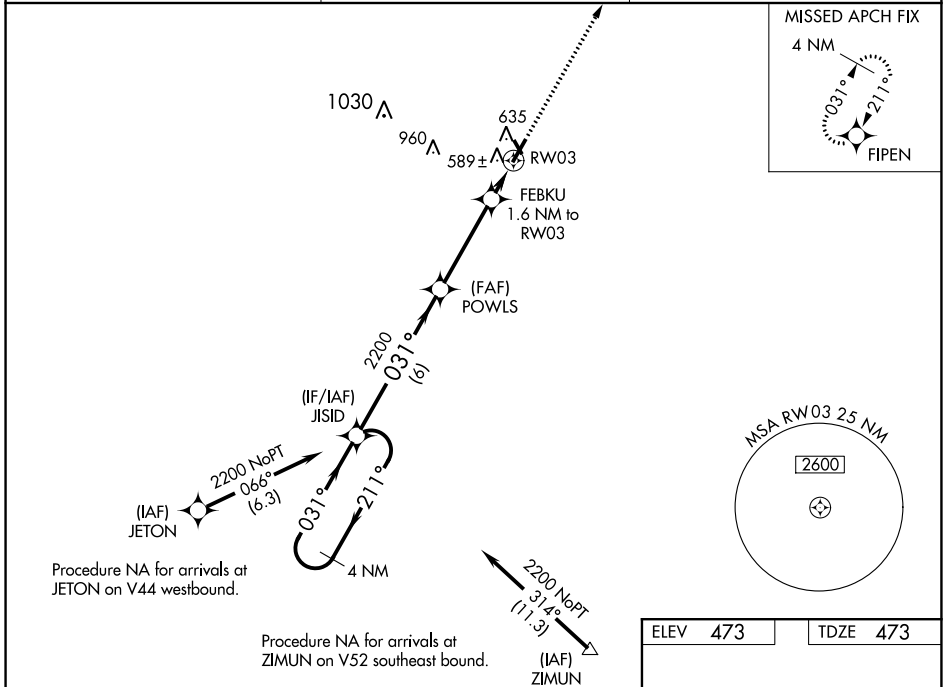
FLORA MUNI (F.O.A.)

RNP APCH.

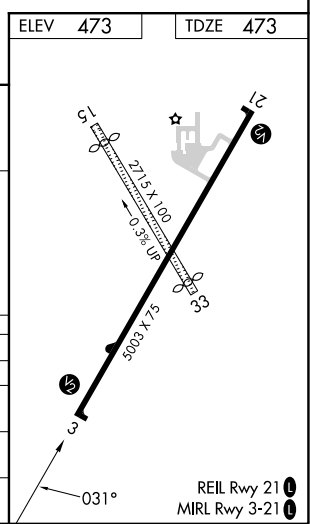
⚠ Baro-VNAV NA when using Olney-Noble altimeter setting. For uncompensated Baro-VNAV systems, LNAV/VNAV NA below -17°C or above 54°C. When local altimeter setting not received, use Olney-Noble altimeter setting; increase LPV DA to 816 feet and visibility 1/8 SM; increase LNAV/VNAV DA to 892 feet; increase all MDAs 40 feet and LNAV Cat C visibility 1/8 SM. Rwy 3 helicopter visibility reduction below 3/4 SM NA. Circling NA to Rwy's 15 and 33.

MISSED APPROACH: Climb to 2200 direct FIPEN and hold.

AWOS-3 120.175	KANSAS CITY CENTER 127.7 351.825	UNICOM 122.7 (CTAF) 0
--------------------------	--	---------------------------------



CATEGORY	A	B	C	D
LPV DA	783-1	310 (400-1)		NA
LNAV/VNAV	859-1 3/8	386 (400-1 1/8)		NA
LNAV MDA	860-1	387 (400-1)	860-1 1/8 387 (400-1 1/8)	NA
CIRCLING	940-1	467 (500-1)	1160-2 687 (700-2)	NA



EC-3, 28 NOV 2024 to 26 DEC 2024

EC-3, 28 NOV 2024 to 26 DEC 2024