

| | | |
|---------------------------------|------------------------|---|
| WAAS CH 45709 W06A | APP CRS 060° | Rwy Idg 5501 TDZE 526 Apt Elev 526 |
|---------------------------------|------------------------|---|

RNAV (GPS) RWY 6

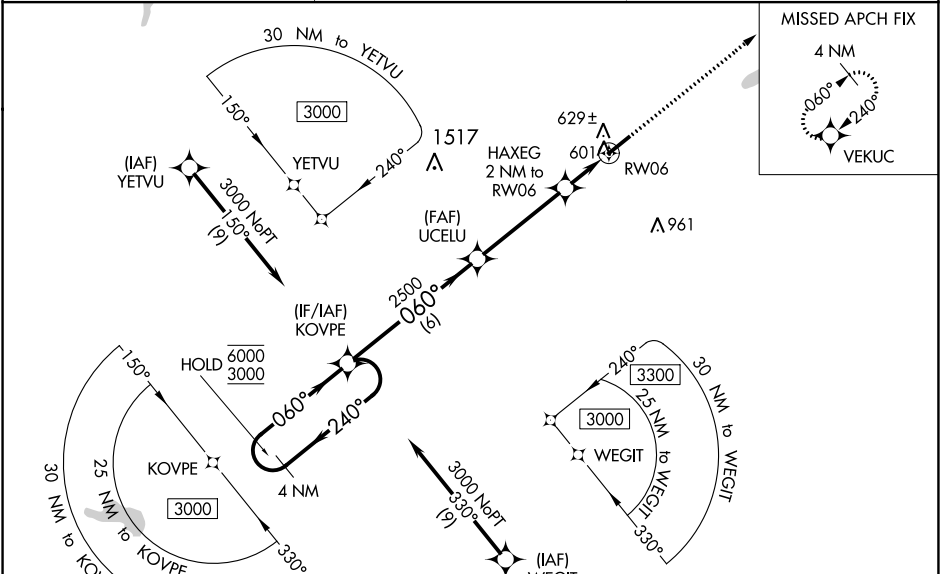
HENDERSON/OXFORD (HNZ)

RNP APCH - GPS.

For uncompensated Baro-VNAV systems, LNAV/VNAV NA below -16°C or above 54°C.
 When local altimeter setting not received, use Roxboro altimeter setting: increase all DA to 875 feet and all visibilities 1/8 SM; increase all MDA 80 feet and visibility Cats C and D 1/4 SM. Baro-VNAV and VDP NA when using Roxboro altimeter setting.
 Rwy 6 helicopter visibility reduction below 1/4 SM NA.

MISSED APPROACH: Climb to 3000 direct VEKUC and hold.

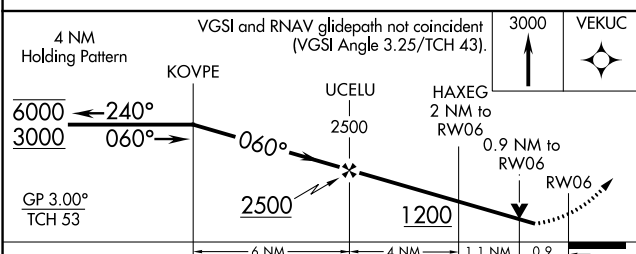
| | | |
|--------------------------|--|------------------------------|
| AWOS-3 118.625 | RALEIGH APP CON 132.35 256.9 | UNICOM 122.8(CTAF) |
|--------------------------|--|------------------------------|



SE-2, 28 NOV 2024 to 26 DEC 2024

SE-2, 28 NOV 2024 to 26 DEC 2024

| | |
|----------|----------|
| ELEV 526 | TDZE 526 |
|----------|----------|



| CATEGORY | A | B | C | D |
|--------------|-------------|-------------|-----------------|-----------------|
| LPV DA | | 811-7/8 | 285 (300-7/8) | |
| LNAV/VNAV DA | | 810-7/8 | 284 (300-7/8) | |
| LNAV MDA | | 880-1 | 354 (400-1) | |
| CIRCLING | 960-1 | 980-1 | 1100-1 1/2 | 1280-2 1/2 |
| | 434 (500-1) | 454 (500-1) | 574 (600-1 1/2) | 754 (800-2 1/2) |

