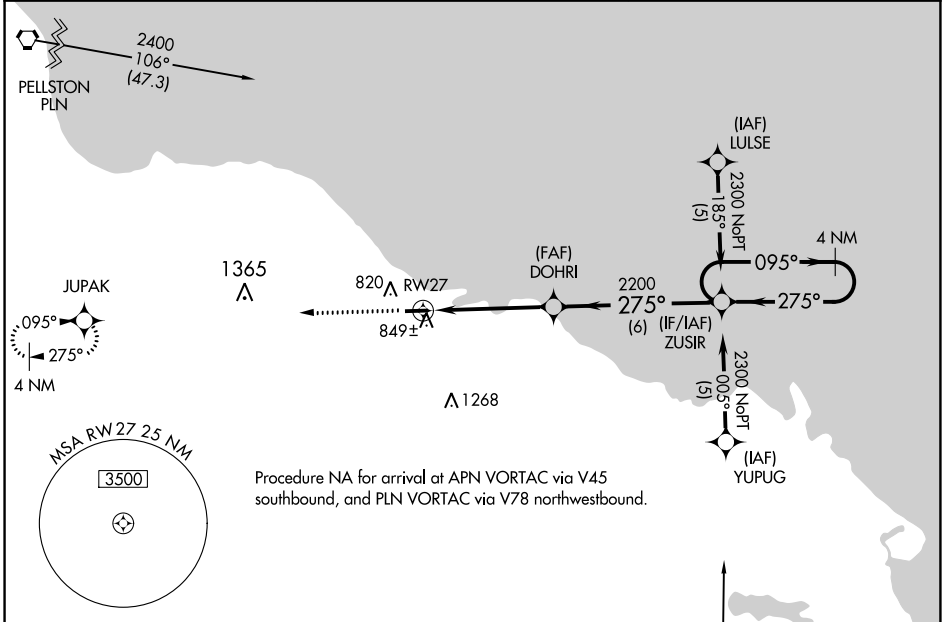


APP CRS 275°	Rwy Idg 3727
	TDZE 670
	Apt Elev 670

RNAV (GPS) RWY 27

PRESQUE ISLE COUNTY (PZQ)

<p>▼ DME/DME RNP-0.3 NA. Circling NA at night to Rwy 9. ▲ NA If local altimeter setting not received, use Alpena County Rgnl altimeter setting and increase all MDAs 60 feet. VDP NA with Alpena County Rgnl altimeter setting.</p>	<p>MISSED APPROACH: Climb to 2500 direct JUPAK and hold.</p>	
<p>AWOS-3 118.125</p>	<p>ALPENA APP CON ★ 128.425 379.3</p>	<p>CTAF 122.9</p>



EC-1, 28 NOV 2024 to 26 DEC 2024

EC-1, 28 NOV 2024 to 26 DEC 2024

ELEV 670	TDZE 670
<p>REIL Rwy 9 and 27 ① MIRL Rwy 9-27 ①</p>	

<p>2500 JUPAK</p> <p>DOHRI</p> <p>ZUSIR</p> <p>ALPENA APN</p>																
<table border="1"> <thead> <tr> <th>CATEGORY</th> <th>A</th> <th>B</th> <th>C</th> <th>D</th> </tr> </thead> <tbody> <tr> <td>LNAV MDA</td> <td>1100-1</td> <td>430 (500-1)</td> <td>1100-1¼ 430 (500-1¼)</td> <td>NA</td> </tr> <tr> <td>CIRCLING</td> <td>1200-1 530 (600-1)</td> <td>1240-1 570 (600-1)</td> <td>1260-1½ 590 (600-1½)</td> <td>NA</td> </tr> </tbody> </table>	CATEGORY	A	B	C	D	LNAV MDA	1100-1	430 (500-1)	1100-1¼ 430 (500-1¼)	NA	CIRCLING	1200-1 530 (600-1)	1240-1 570 (600-1)	1260-1½ 590 (600-1½)	NA	<p>REL Rwy 9 and 27 ① MIRL Rwy 9-27 ①</p>
CATEGORY	A	B	C	D												
LNAV MDA	1100-1	430 (500-1)	1100-1¼ 430 (500-1¼)	NA												
CIRCLING	1200-1 530 (600-1)	1240-1 570 (600-1)	1260-1½ 590 (600-1½)	NA												