

APP CRS	Rwy Idg	3886
095°	TDZE	669
	Apt Elev	670

RNAV (GPS) RWY 9

PRESQUE ISLE COUNTY (PZQ)

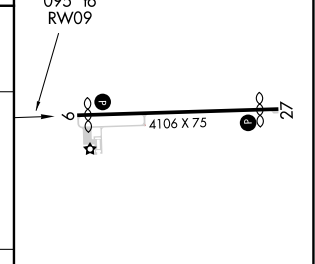
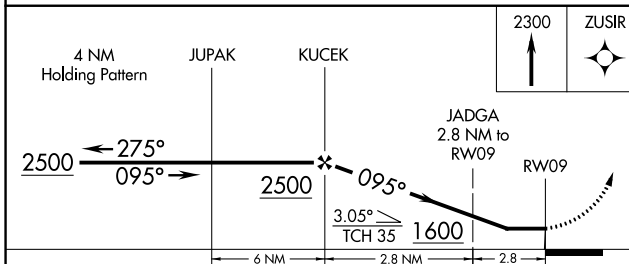
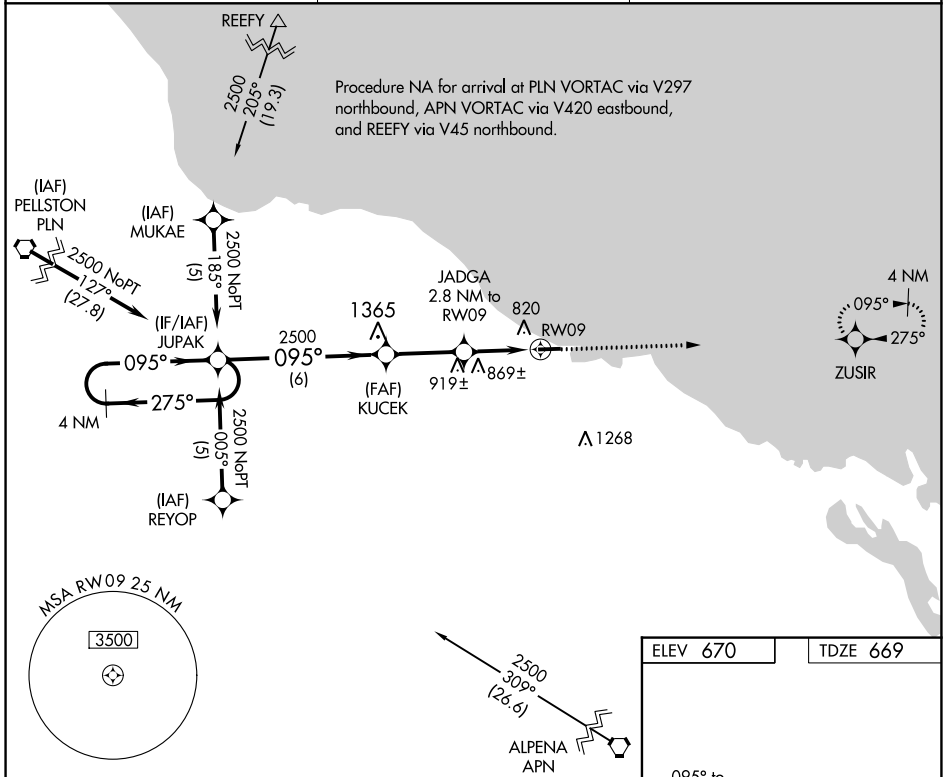
RNP APCH.
 ▼ If local altimeter setting not received, use Alpena County Rgnl altimeter setting and increase all MDAs 60 feet. Straight-in/Circling Rwy 9 NA at night. Rwy 9 helicopter visibility reduction below 1 SM NA.
 ▲ NA

MISSED APPROACH: Climb to 2300 direct ZUSIR and hold.

AWOS-3
118.125

ALPENA APP CON ★
128.425 379.3

CTAF
122.9 0



CATEGORY	A	B	C	D
LNVA MDA	1120-1	451 (500-1)	1120-1¼ 451 (500-1¼)	NA
CIRCLING	1200-1 530 (600-1)	1240-1 570 (600-1)	1260-1½ 590 (600-1½)	NA

ELEV 670 | TDZE 669

REIL Rwy 9 and 27 0
 MRL Rwy 9-27 0

EC-1, 28 NOV 2024 to 26 DEC 2024

EC-1, 28 NOV 2024 to 26 DEC 2024