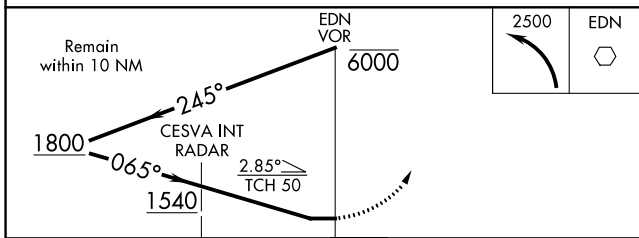
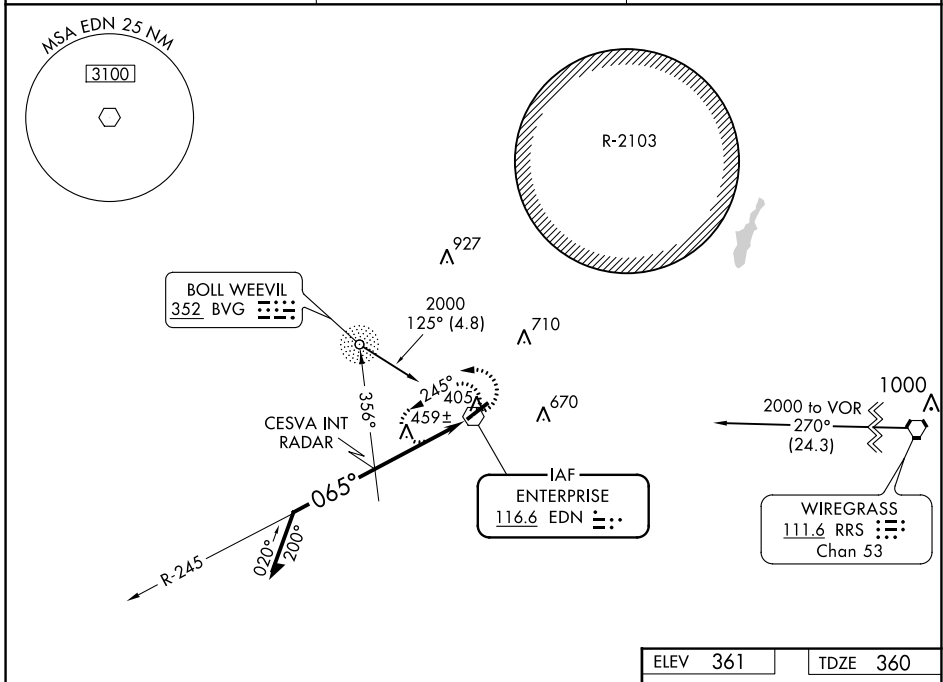


VOR EDN 116.6	APP CRS 065°	Rwy Idg 5080
		TDZE 360
		Apt Elev 361

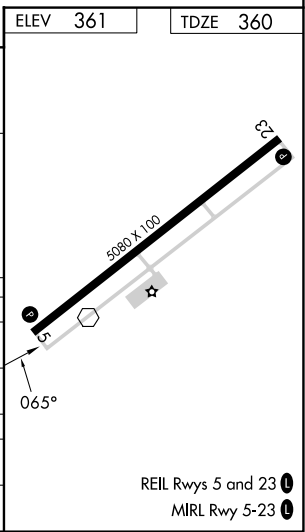
VOR RWY 5

ENTERPRISE MUNI(EDN)

<p>▽ ADF or RADAR required.</p> <p>▲ NA Use Cairns AAF (Fort Novosel) altimeter setting.</p>	<p>MISSED APPROACH: Climbing left turn to 2500 in EDN VOR holding pattern.</p>
<p>AWOS-3PT 118.9</p>	<p>CAIRNS APP CON * 133.45 239.275</p>
<p>UNICOM 122.8 (CTAF) 0</p>	



CATEGORY	A	B	C	D
S-5	1540-1¼ 1180 (1200-1¼)	1540-1½ 1180 (1200-1½)	1540-3 1180 (1200-3)	NA
CIRCLING	1540-1¼ 1179 (1200-1¼)	1540-1½ 1179 (1200-1½)	1540-3 1179 (1200-3)	NA
CESVA INT/RADAR MINIMUMS				
S-5	820-1	460 (500-1)	820-1¼ 460 (500-1¼)	NA
CIRCLING	920-1	559 (600-1)	1100-2 739 (800-2)	NA



SE-4, 28 NOV 2024 to 26 DEC 2024

SE-4, 28 NOV 2024 to 26 DEC 2024