

APP CRS	Rwy Idg	4870
010°	TDZE	722
	Apt Elev	726

RNAV (GPS) RWY 1

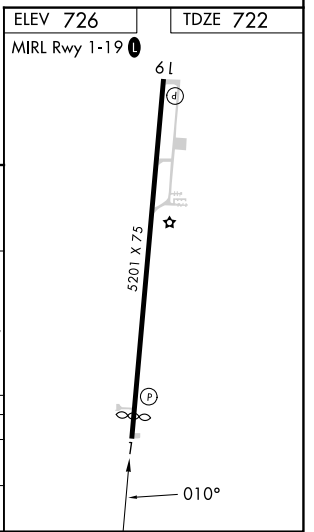
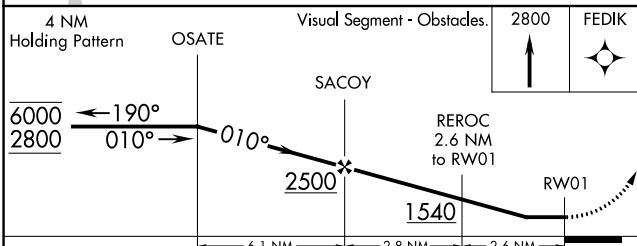
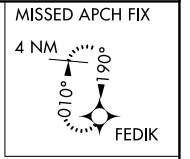
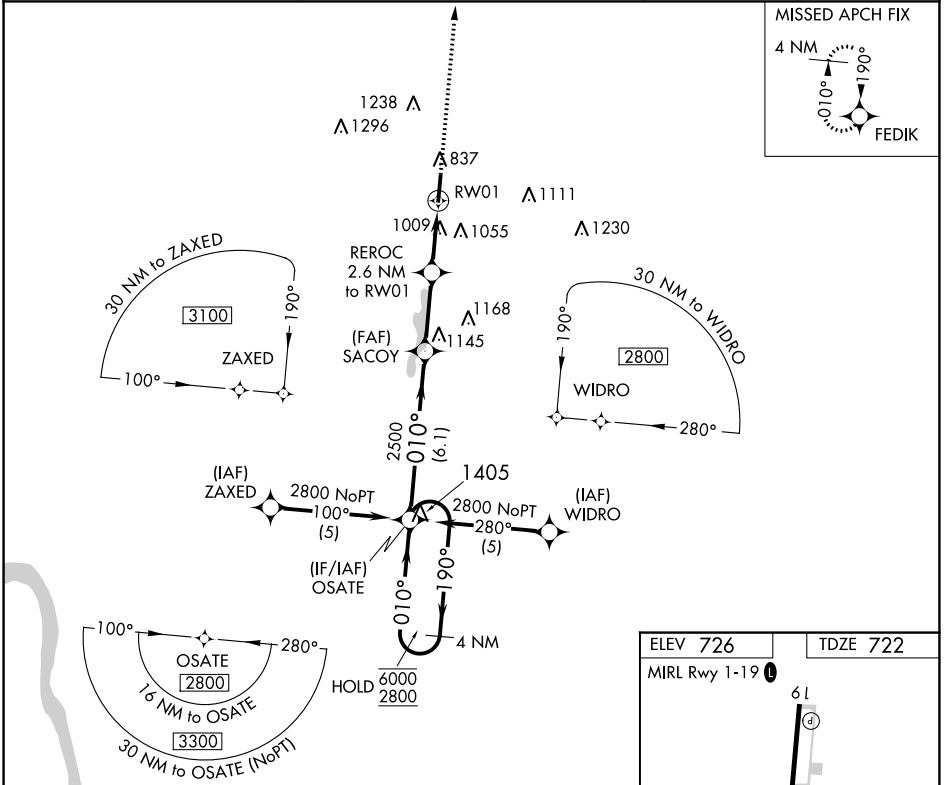
JAMES A RHODES (JRO)

RNP APCH - GPS.

Procedure NA at night. Rwy 1 helicopter visibility reduction below 1 SM NA.

MISSED APPROACH: Climb to 2800 direct FEDIK and hold.

AWOS-3PT 118.825	HUNTINGTON APP CON 128.4 270.1	UNICOM 122.7 (CTAF) 0
----------------------------	--	---------------------------------



CATEGORY	A	B	C	D
LNVA MDA	1300-1	578 (600-1)	1300-1½	578 (600-1½)
CIRCLING	1340-1 614 (700-1)	1480-1 754 (800-1)	1680-3	954 (1000-3)

EC-2, 28 NOV 2024 to 26 DEC 2024

EC-2, 28 NOV 2024 to 26 DEC 2024