

WAAS CH <b>53530</b> <b>W32A</b>	APP CRS <b>317°</b>	Rwy Idg TDZE <b>1082</b> Apt Elev <b>1083</b>
--	------------------------	---

# RNAV (GPS) RWY 32

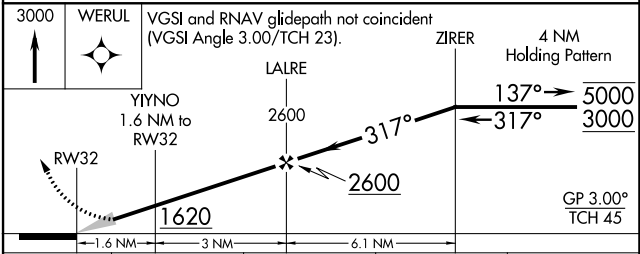
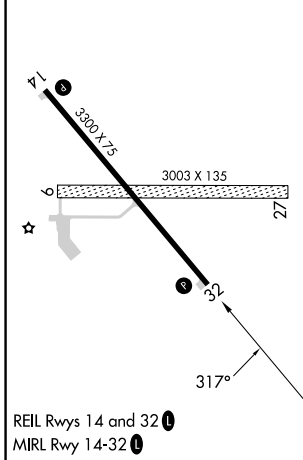
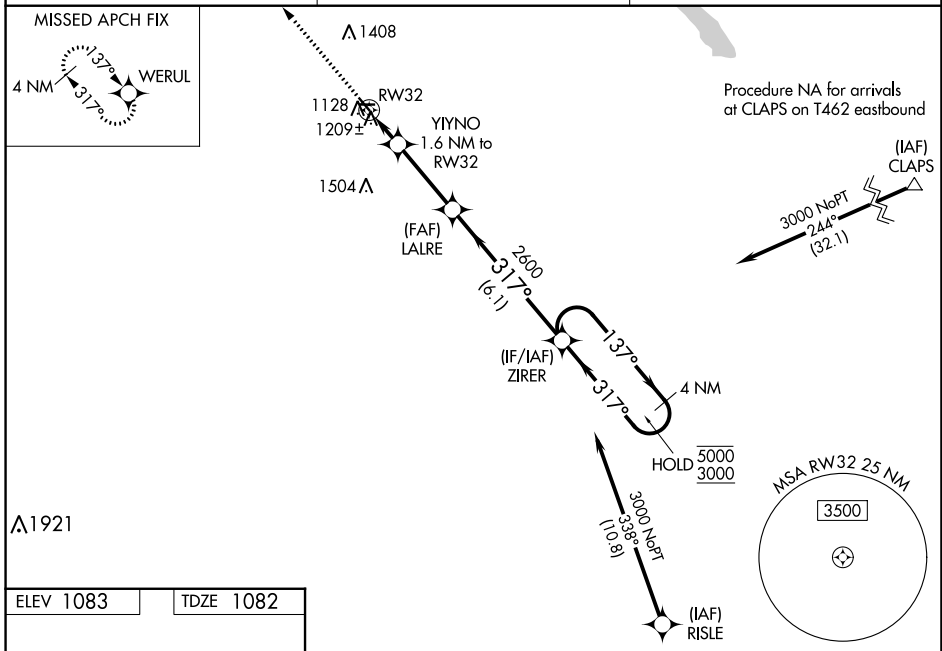
LAC QUI PARLE COUNTY (DXX)

RNP APCH - GPS.

Baro-VNAV NA when using Appleton Muni altimeter setting. For uncompensated Baro-VNAV systems, LNAV/VNAV NA below -17°C or above 54°C. Circling NA to Rwys 9 and 27. When local altimeter setting not received, use Appleton Muni altimeter setting; increase LPV DA to 1329 feet; increase LNAV/VNAV DA to 1409 feet and visibility ½ SM; increase all MDAs 60 feet and Circling Cat C visibility ½ SM.

MISSED APPROACH: Climb to 3000 direct WERUL and hold.

AWOS-3 <b>118.975</b>	MINNEAPOLIS CENTER <b>128.5 306.2</b>	UNICOM <b>122.8 (CTAF) 0</b>
--------------------------	--	---------------------------------



CATEGORY	A	B	C	D
LPV DA	1282-¾	200 (200-¾)		NA
LNAV/VNAV DA	1363-⅞	281 (300-⅞)		NA
LNAV MDA	1460-1	378 (400-1)	1460-1⅞ 378 (400-1⅞)	NA
CIRCLING	1640-1	557 (600-1)	1820-2 737 (800-2)	NA

NC-1, 28 NOV 2024 to 26 DEC 2024

NC-1, 28 NOV 2024 to 26 DEC 2024