

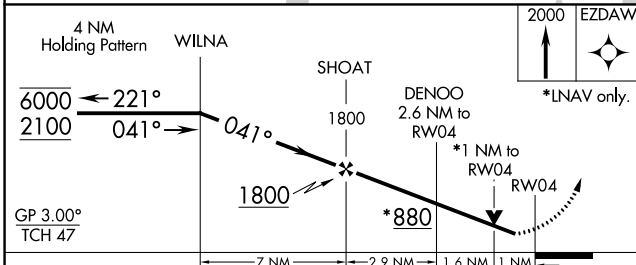
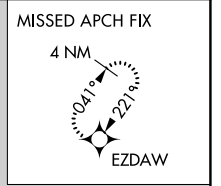
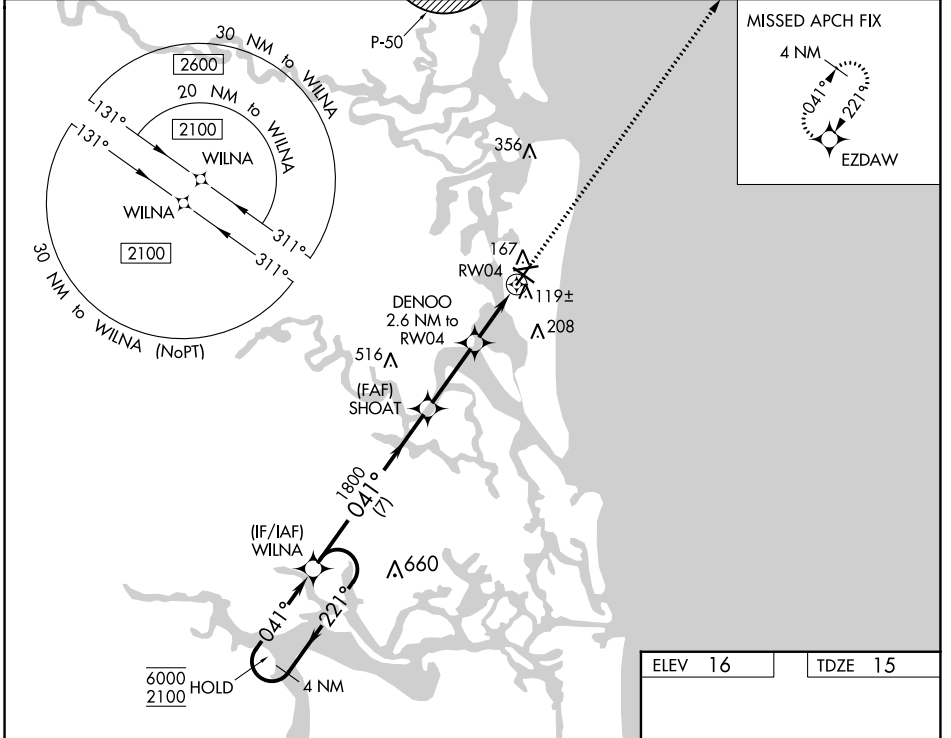
WAAS CH 90343 W04A	APP CRS 041°	Rwy Idg TDZE 15 Apt Elev 16	5301
--	------------------------	---	-------------

RNAV (GPS) RWY 4

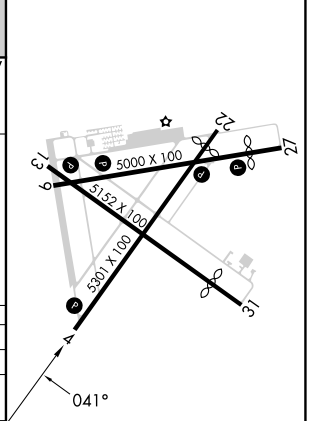
FERNANDINA BEACH MUNI (FHB)

RNP APCH - GPS.	<p>▼ Circling Rwy 9, 22, 27 NA at night. Rwy 4 helicopter visibility reduction below $\frac{3}{4}$ SM NA. ▲ For uncompensated Baro-VNAV systems, LNAV/VNAV NA below -15°C or above 54°C.</p>	MISSED APPROACH: Climb to 2000 direct EZDAW and hold.
-----------------	--	---

AWOS-3 118.075	JACKSONVILLE APP CON 127.0 292.15	UNICOM 122.7 (CTAF) 0
--------------------------	---	---------------------------------



ELEV 16	TDZE 15
---------	---------



CATEGORY	A	B	C	D
LPV DA		265- $\frac{7}{8}$	250 (300- $\frac{7}{8}$)	
LNAV/VNAV DA		280- $\frac{7}{8}$	265 (300- $\frac{7}{8}$)	
LNAV MDA		380-1	365 (400-1)	
C CIRCLING	480-1	464 (500-1)	580-1 $\frac{1}{2}$ 564 (600-1 $\frac{1}{2}$)	580-2 564 (600-2)

REIL Rwy 4 and 13 **0**
MIRL Rwy 4-22, 9-27 and 13-31 **0**

SE-3, 28 NOV 2024 to 26 DEC 2024

SE-3, 28 NOV 2024 to 26 DEC 2024