

WAAS CH <b>40202</b> <b>W36A</b>	APP CRS <b>359°</b>	Rwy Idg TDZE Apt Elev	<b>5101</b> <b>1228</b> <b>1228</b>
--	------------------------	-----------------------------	---

# RNAV (GPS) RWY 36

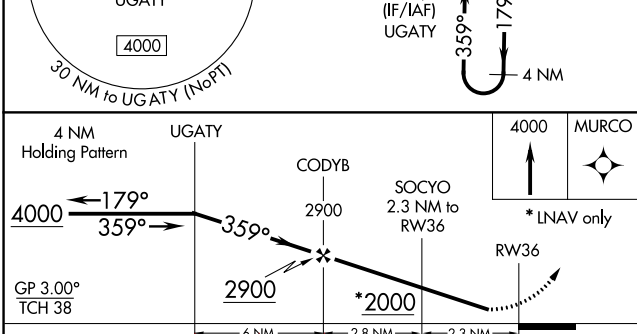
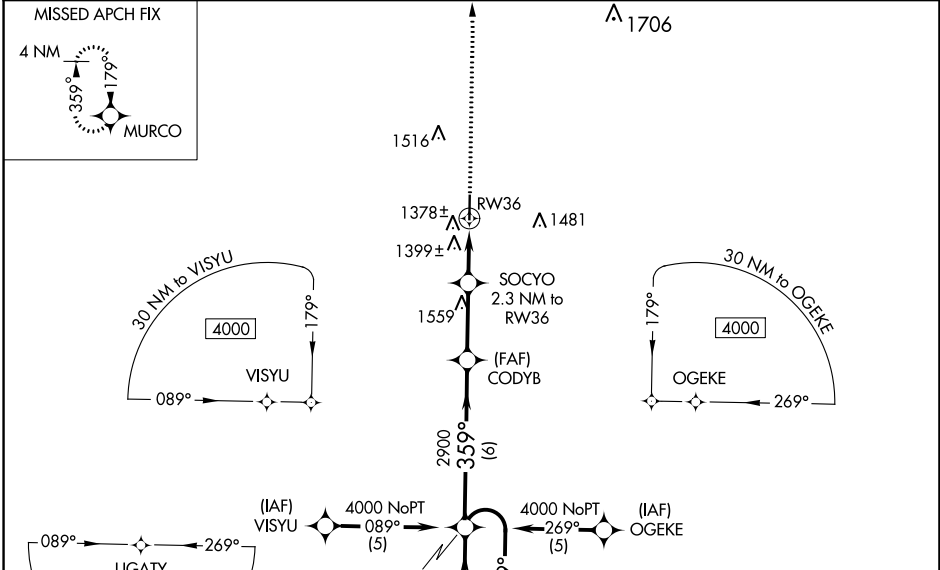
WEST PLAINS RGNL (UNO)

RNP APCH - GPS.

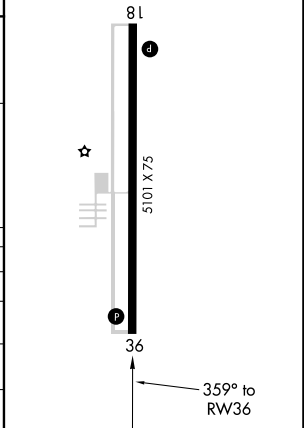
**⚠** Baro-VNAV NA when using Mountain Home altimeter setting. Visibility reduction by helicopters NA. When local altimeter setting not received, use Mountain Home, AR altimeter setting: increase LPV DA to 1657 feet and all visibilities ½ SM; increase LNAV/VNAV DA to 1850 feet and all visibilities ¼ SM; increase all MDAs 140 feet and visibility LNAV Cat C ¼ SM and Circling Cat C ½ SM. For uncompensated Baro-VNAV systems, LNAV/VNAV NA below -17°C (2°F) or above 54°C (130°F).

MISSED APPROACH: Climb to 4000 direct MURCO and hold.

ASOS <b>123,825</b>	MEMPHIS CENTER <b>120,075 289.4</b>	UNICOM <b>122.8 (CTAF) 1</b>
------------------------	--	---------------------------------



ELEV 1228	TDZE 1228
MIRL Rwy 18-36 1	
REIL Rwy 18 and 36 1	



CATEGORY	A	B	C	D
LPV DA	1520-1 292 (300-1)			NA
LNAV/VNAV DA	1713-1¾ 485 (500-1¾)			NA
LNAV MDA	1660-1	432 (500-1)	1660-1¼ 432 (500-1¼)	NA
CIRCLING	1720-1 492 (500-1)	1740-1 512 (600-1)	1820-1½ 592 (600-1½)	NA

NC-3, 28 NOV 2024 to 26 DEC 2024

NC-3, 28 NOV 2024 to 26 DEC 2024