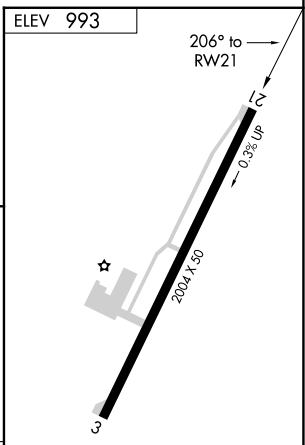
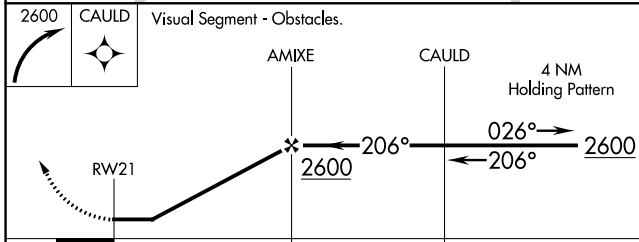
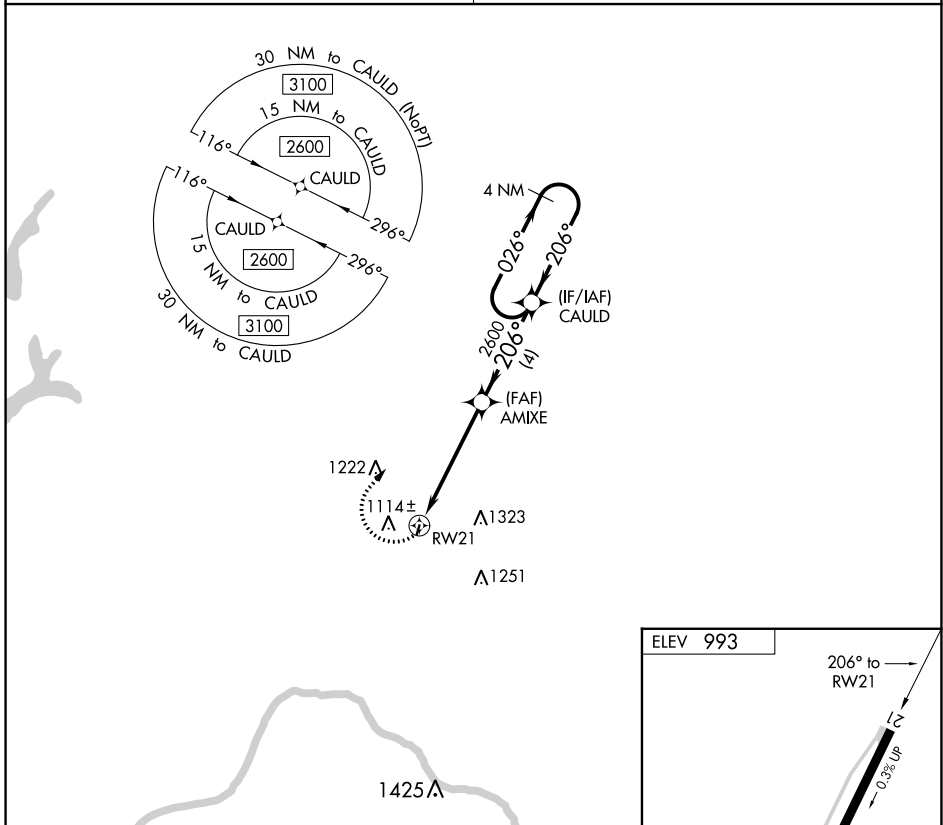


APP CRS <b>206°</b>	Rwy Idg TDZE Apt Elev	<b>N/A</b> <b>N/A</b> <b>993</b>
------------------------	-----------------------------	--

# RNAV (GPS)-B

EXCELSIOR SPRINGS MEML (3E)X

<p><b>⚠ NA</b> Use Charles B Wheeler Downtown altimeter setting. DME/DME RNP-0.3 NA. Procedure NA at night. Helicopter visibility reduction below 1 SM NA.</p>	<p>MISSED APPROACH: Climbing right turn to 2600 direct CAULD and hold.</p>
<p>KANSAS CITY APP CON <b>118.4 307.35</b></p>	<p>UNICOM <b>122.7 (CTAF)</b></p>



CATEGORY	A	B	C	D
<b>C</b> CIRCLING	1660-1 667 (700-1)		NA	

IURL Rwy 3-21

NC-3, 28 NOV 2024 to 26 DEC 2024

NC-3, 28 NOV 2024 to 26 DEC 2024